

# DISCOVER CASTLES ALONG THE RHINE WITH PAPAPIETRO PERRY WINERY

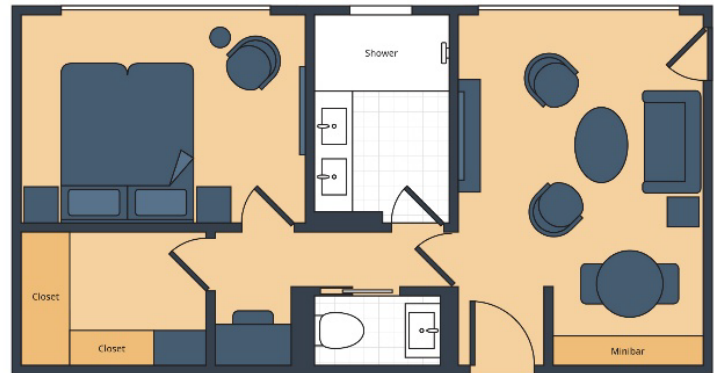
**WAITLIST  
ONLY**

SS ELISABETH › 9 NIGHTS › BASEL TO AMSTERDAM › MAY 16 TO 25, 2027

**ROYAL SUITE (506 SQ. FT.) \$18,798 ~~\$16,988~~ per person\*** *Note: Stateroom layouts shown below are not to scale.*



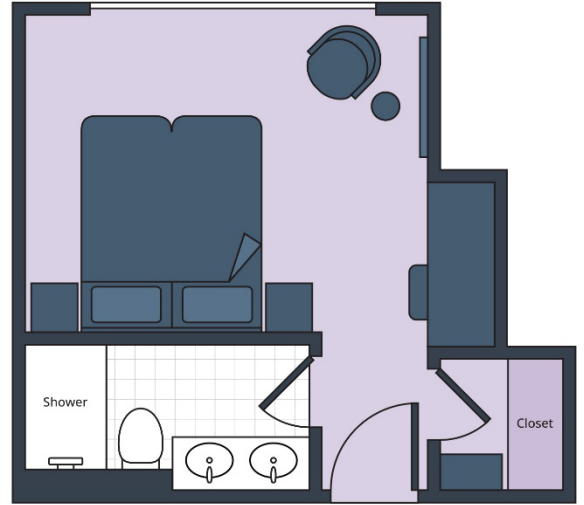
**SAVE UP TO 10%  
IF YOU BOOK BY JUNE 30, 2026**



**SUITE A (253 SQ. FT.) \$9,998 ~~\$9,068~~ per person\***



**SUITE B (253 SQ. FT.) ~~\$9,798~~ \$8,888 per person \***



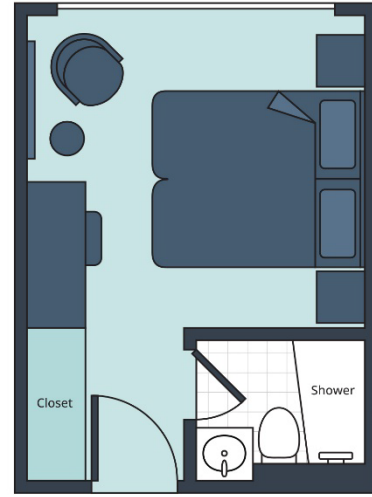
**SIGNATURE FRENCH BALCONY A (253 SQ. FT.) ~~\$8,798~~ \$7,988 per person \***



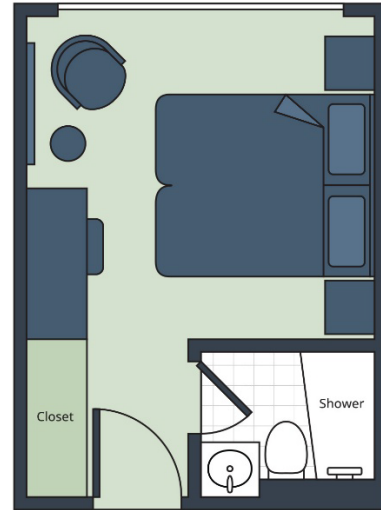
**SIGNATURE FRENCH BALCONY B (253 SQ. FT.) ~~\$8,598~~ \$7,808 per person \***



**DELUXE FRENCH BALCONY (188 SQ. FT.) ~~\$7,698~~ \$6,998 per person \***



**FRENCH BALCONY (188 SQ. FT.) ~~\$6,798~~ \$6,188 per person \***

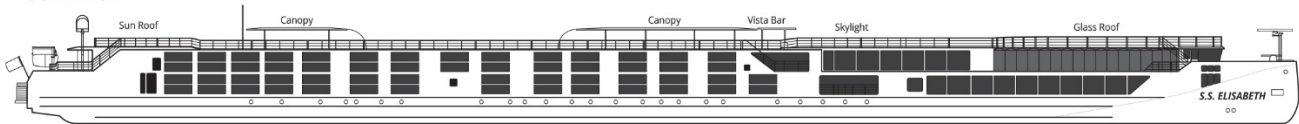


# S.S. ELISABETH DECK PLAN

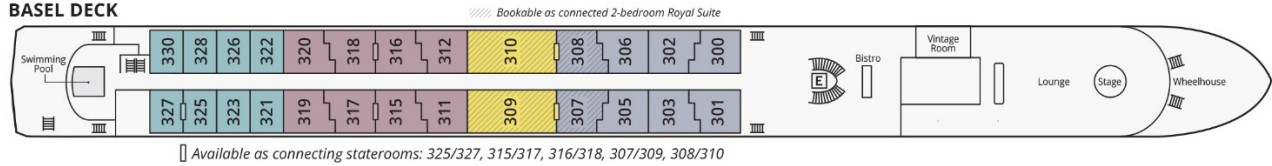
## S.S. ELISABETH

Length: 442.5 ft Width: 37.5 ft Guests: 110 Staff: 41 River: Rhine

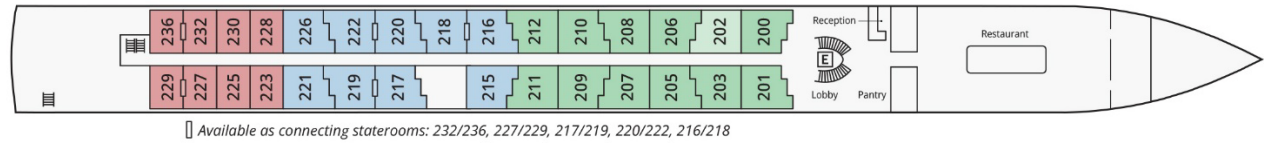
### SUN DECK



### BASEL DECK



### COLOGNE DECK



### AMSTERDAM DECK



■ Royal Suite   
 ■ Suite A   
 ■ Signature French Balcony A   
 ■ Deluxe French Balcony   
 ■ French Balcony   
 E Elevator  
■ Suite B   
 ■ Signature French Balcony B

**Note:** Stateroom 202 is 16 sq. ft. smaller than the other Signature French Balcony staterooms.

\* Prices are per person, double occupancy, and include the 7-night cruise plus the 2-night Amsterdam extension. Cruise-only option is available – call for pricing.