

# UC Davis and Chancellor May's Inaugural Wine Cruise *Discover Castles Along the Rhine*

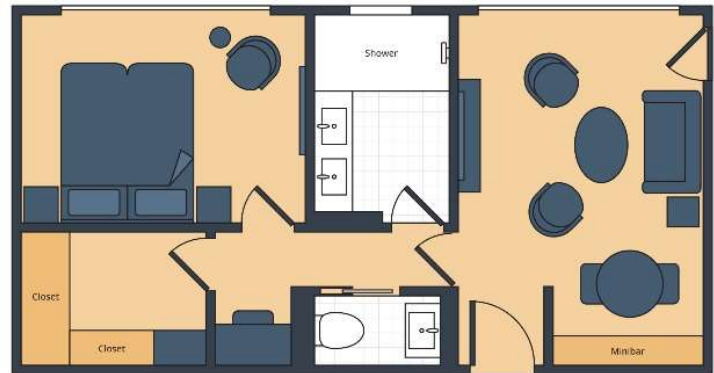


**SS Elisabeth • 10 Days • Amsterdam to Basell • July 30 to August 8, 2027**

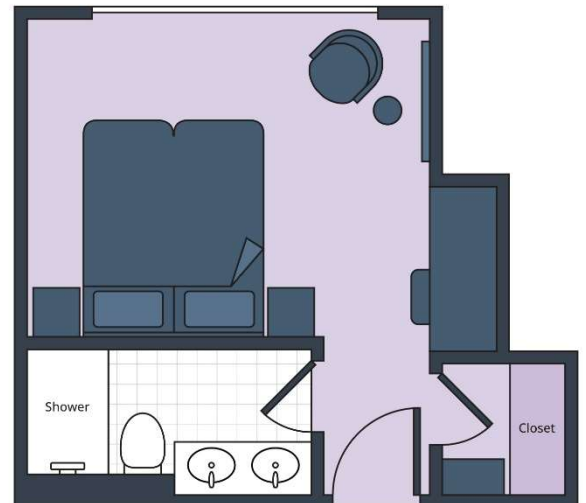
**ROYAL SUITE (506 SQ. FT.) \$19,143 ~~\$17,629~~ per person\*** *Note: Stateroom layouts shown below are not to scale.*



**SAVE UP TO 10%  
IF YOU BOOK BY JUNE 30, 2026**



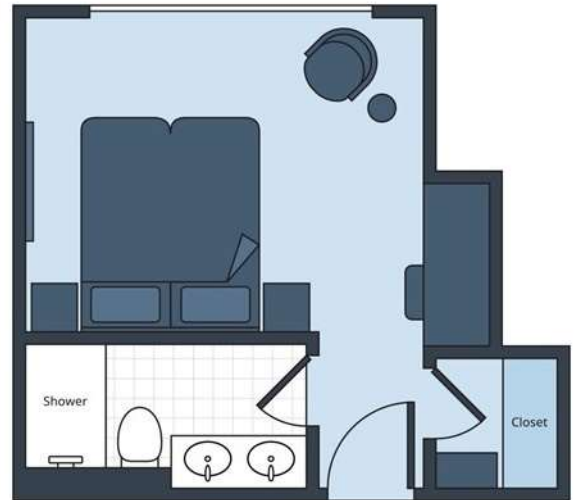
**SUITE A (253 SQ. FT.) \$10,343 ~~\$9,709~~ per person\***



**SUITE B (253 SQ. FT.) \$10,143 ~~\$9,529~~ per person \***



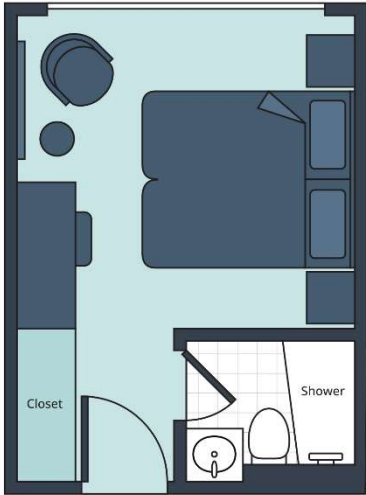
**SIGNATURE FRENCH BALCONY A (253 SQ. FT.) ~~\$9,143~~ \$8,629 per person \***



**SIGNATURE FRENCH BALCONY B (253 SQ. FT.) ~~\$8,943~~ \$8,449 per person \***



**DELUXE FRENCH BALCONY (188 SQ. FT.) ~~\$8,043~~ \$7,639 per person \***

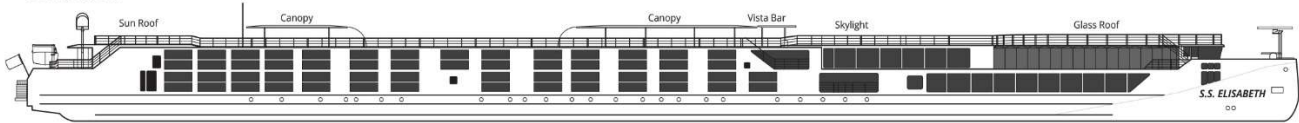


# S.S. ELISABETH DECK PLAN

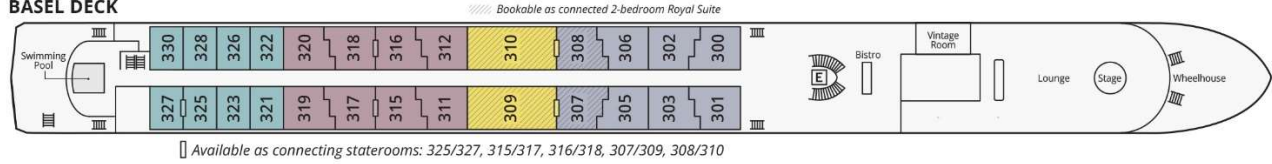
## S.S. ELISABETH

Length: 442.5 ft Width: 37.5 ft Guests: 110 Staff: 41 River: Rhine

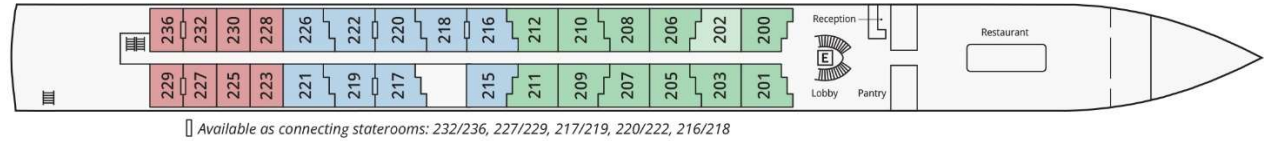
### SUN DECK



### BASEL DECK



### COLOGNE DECK



### AMSTERDAM DECK



- Royal Suite
- Suite A
- Signature French Balcony A
- Deluxe French Balcony
- French Balcony
- Elevator
- Suite B
- Signature French Balcony B

**Note:** Stateroom 202 is 16 sq. ft. smaller than the other Signature French Balcony staterooms.

\* Prices are per person, double occupancy, and include the 7-night cruise plus the 2-night Amsterdam extension. Cruise-only option is available – call for pricing.