

## Steven Kent Winery

Aboard AmaKristina • 7 Nights • March 25 to April 1, 2027

*Note: Stateroom layouts shown below are not to scale.*

**Book by May 31, 2026  
for this Special Pricing!**

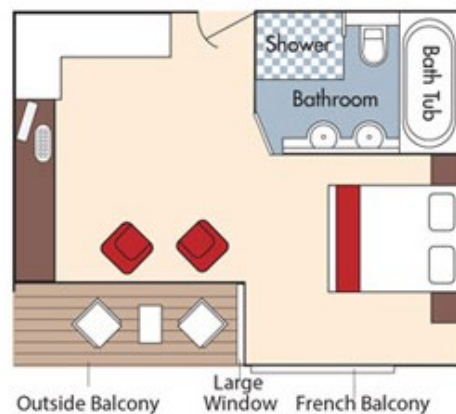
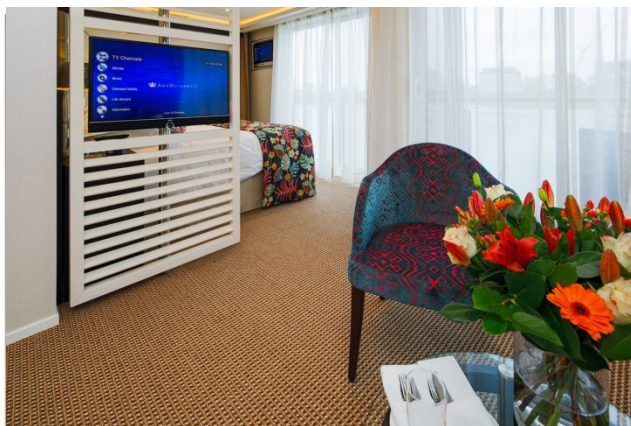


### Suite *Violin Deck*

French Balcony & Outside Balcony, 350 sq. ft.

Brochure Rate = ~~\$9,178~~ pp

Wine Cruise Rate = \$7,928 pp

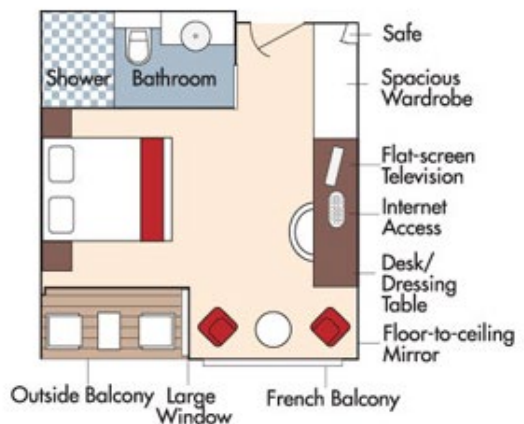


### Category AA *Violin Deck*

French Balcony & Outside Balcony, 235 sq. ft.

Brochure Rate = ~~\$7,778~~ pp

Wine Cruise Rate = \$6,528 pp



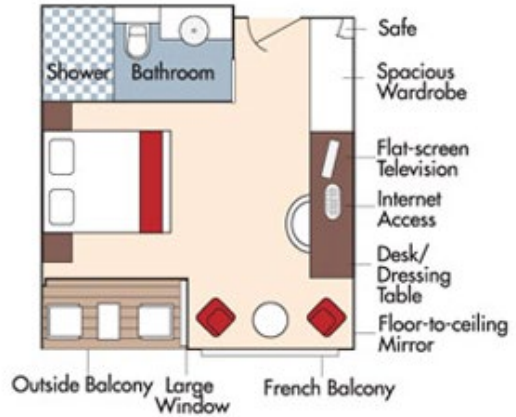


### Category AB *Cello Deck*

French Balcony & Outside Balcony, 235 sq. ft.

Brochure Rate = ~~\$7,578~~ pp

Wine Cruise Rate = \$6,328 pp

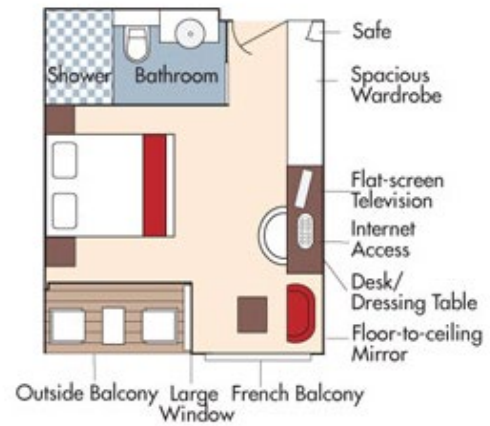


### Category BA *Violin Deck*

French Balcony & Outside Balcony, 210 sq. ft.

Brochure Rate = ~~\$7,378~~ pp

Wine Cruise Rate = \$6,128 pp

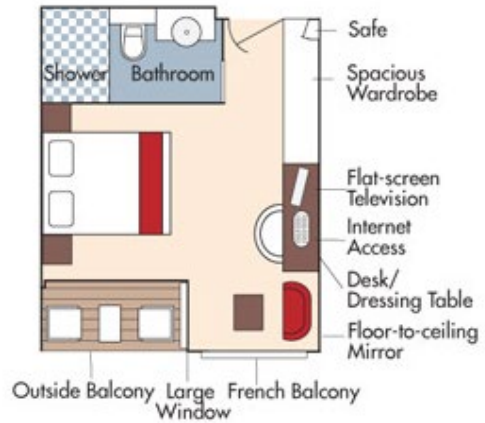


## Category BB *Cello Deck*

French Balcony & Outside Balcony, 210 sq. ft.



Brochure Rate = ~~\$7,178 pp~~  
Wine Cruise Rate \$5,928 pp

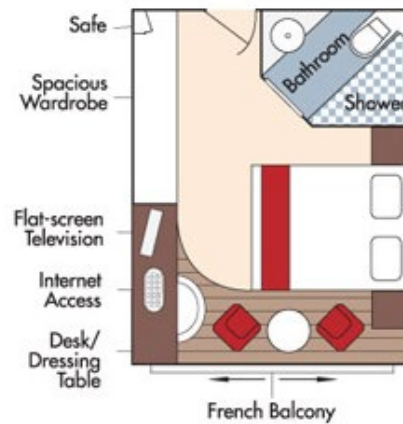


## Category CA *Violin & Cello Deck*

French Balcony, 170 sq. ft.



Brochure Rate = ~~\$6,578 pp~~  
Wine Cruise Rate = \$5,328 pp

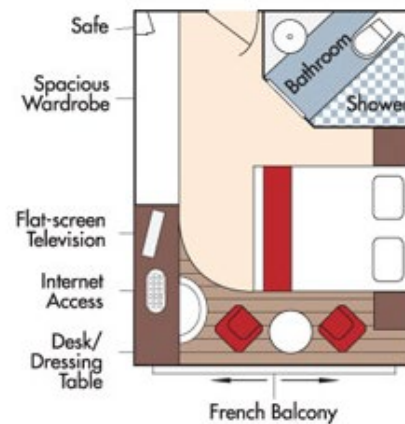


## Category CB *Violin Deck*

French Balcony, 155 sq. ft.

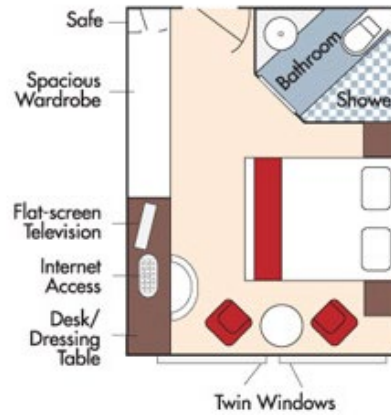


Brochure Rate = ~~\$6,178 pp~~  
Wine Cruise Rate = \$4,928 pp



**Category D** *Piano Deck*  
Fixed Windows, 160 sq. ft.

Brochure Rate = \$5,029 pp  
Wine Cruise Rate = \$3,779 pp

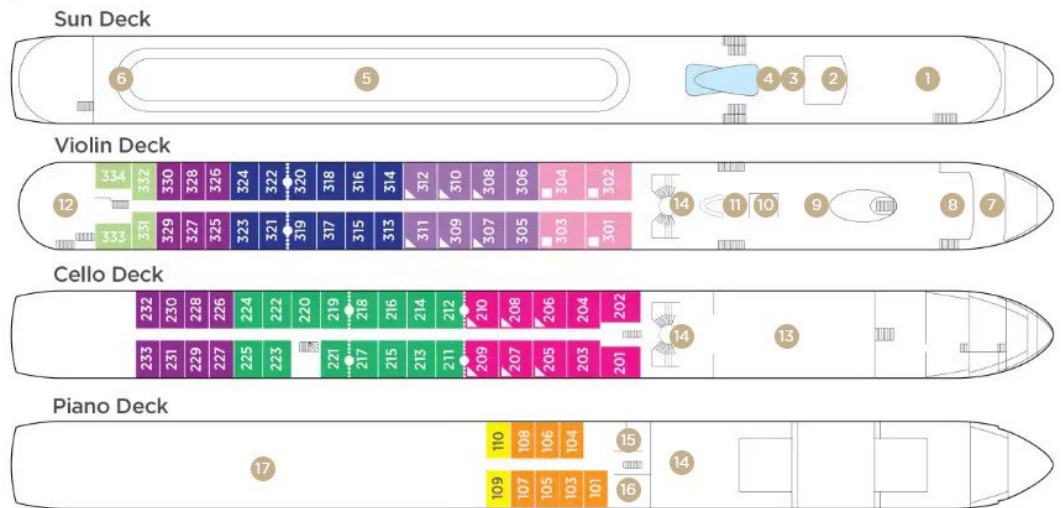


**Category E** *Piano Deck*  
Fixed Windows, 160 sq. ft.

Brochure Rate = \$4,979 pp  
Wine Cruise Rate = \$3,729 pp

## AmaKristina DECK PLAN

1	Lower Sun Deck
2	Navigation Bridge
3	Bicycles
4	Heated Pool
5	Sun Deck
6	Walking Track
7	Al Fresco Terrace
8	Observation Lounge
9	Main Lounge & Bar
10	Gift Shop
11	Reception
12	The Chef's Table Restaurant
13	Main Restaurant
14	Elevator
15	Massage & Hair Salon
16	Fitness Room
17	Crew Cabins



Note: Elevator reaches the Violin, Cello and Piano Deck (does not reach the Sun Deck).

Staterooms can become adjoining by request.

Up to triple occupancy

Up to quadruple occupancy



Fares listed are cruise-only, per person based on double occupancy and INCLUDE port charges of \$280 per person.