



**Special Rates when you
book by March 31, 2026!**

RIVER CRUISE FOR WINE LOVERS

Sonoma-Cutrer Vineyards

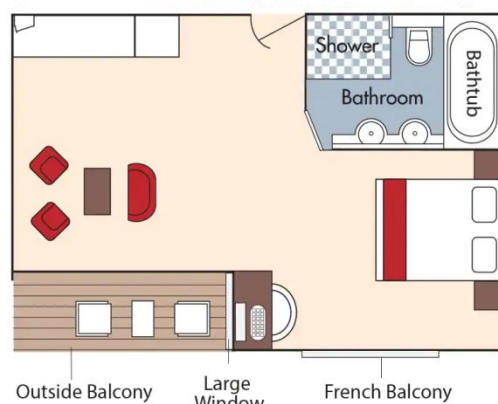
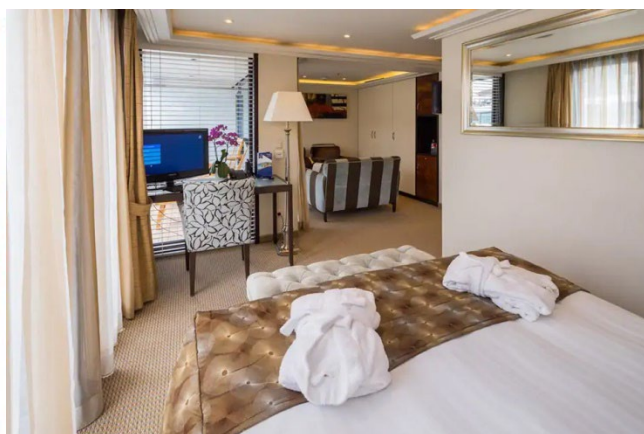
Aboard AmaBella • 7 Nights • April 26 to May 3, 2027

Budapest, Hungary to Giurgiu, Romania

Note: Stateroom layouts shown below are not to scale.

Suite, Violin Deck
French Balcony & Outside Balcony, 350 sq. ft.

Brochure Fare \$9,178 pp
Wine Cruise \$8,928 pp



CAT. AA, Violin Deck
French Balcony & Outside Balcony, 235 sq. ft.

Brochure Fare \$7,778 pp
Wine Cruise \$7,528 pp



Fares listed are cruise-only, per person based on double occupancy and INCLUDE port charges of \$280 per person.



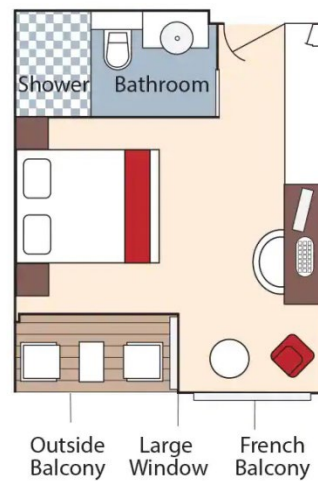
CAT. AB, Cello Deck
French Balcony & Outside Balcony, 235 sq. ft.

Brochure Fare ~~\$7,578~~ pp
Wine Cruise \$7,328 pp



CAT. BA, Violin Deck
French Balcony & Outside Balcony, 210 sq. ft.

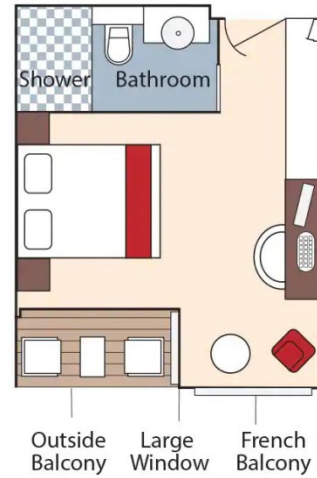
Brochure Fare ~~\$7,378~~ pp
Wine Cruise \$7,128 pp





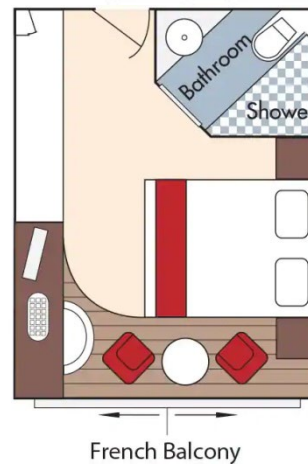
CAT. BB, Cello Deck
French Balcony & Outside Balcony, 210 sq. ft.

Brochure Fare \$7,178 pp
Wine Cruise \$6,928 pp



CAT. C, Violin & Cello Deck
French Balcony, 170 sq. ft.

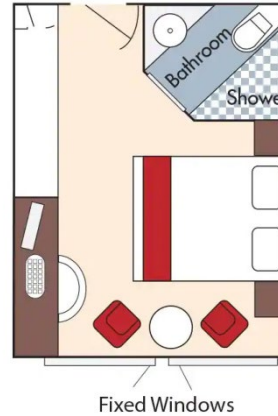
Brochure Fare \$6,578 pp
Wine Cruise \$6,328 pp





CAT. D, Piano Deck
Fixed Windows, 170 sq. ft.

Brochure Fare ~~\$5,029~~ pp
Wine Cruise \$4,779 pp

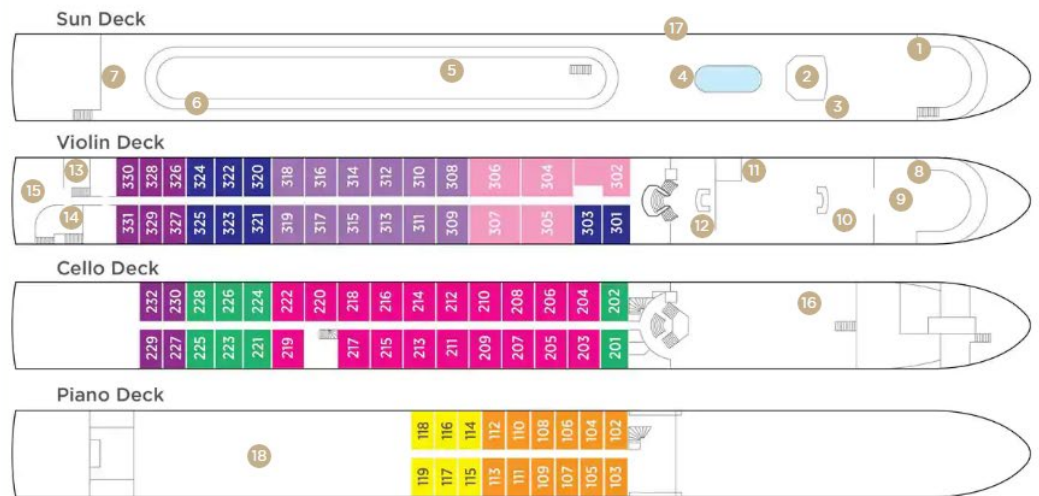


CAT. E, Piano Deck
Fixed Windows, 170 sq. ft.

Brochure Fare ~~\$4,979~~ pp
Wine Cruise \$4,729 pp

AmaBella DECK PLAN

1	Lower Sun Deck
2	Navigation Bridge
3	Bicycles
4	Heated Pool
5	Sun Deck
6	Walking Track
7	Putting Green
8	Bow Seating Area
9	Observation Lounge
10	Main Lounge & Bar
11	Gift Shop
12	Reception
13	Massage & Hair Salon
14	Fitness Room
15	The Chef's Table Restaurant
16	Main Restaurant
17	Elevator
18	Crew Cabins



Stateroom Categories

SUITE	AA	AB	BA	BB	C	D	E
-------	----	----	----	----	---	---	---

Fares listed are cruise-only, per person based on double occupancy and INCLUDE port charges of \$280 per person.