

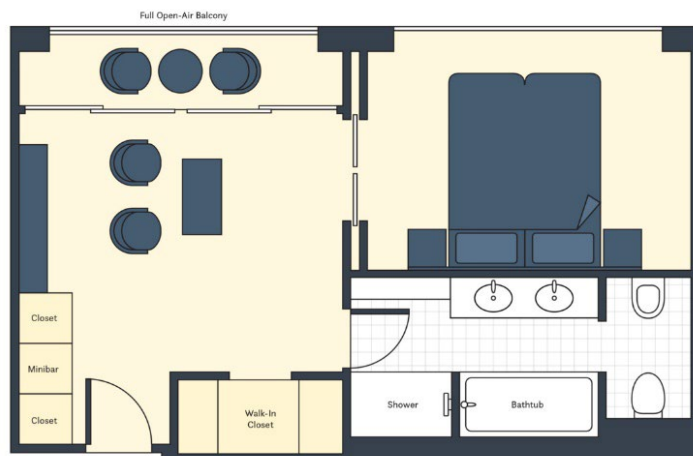
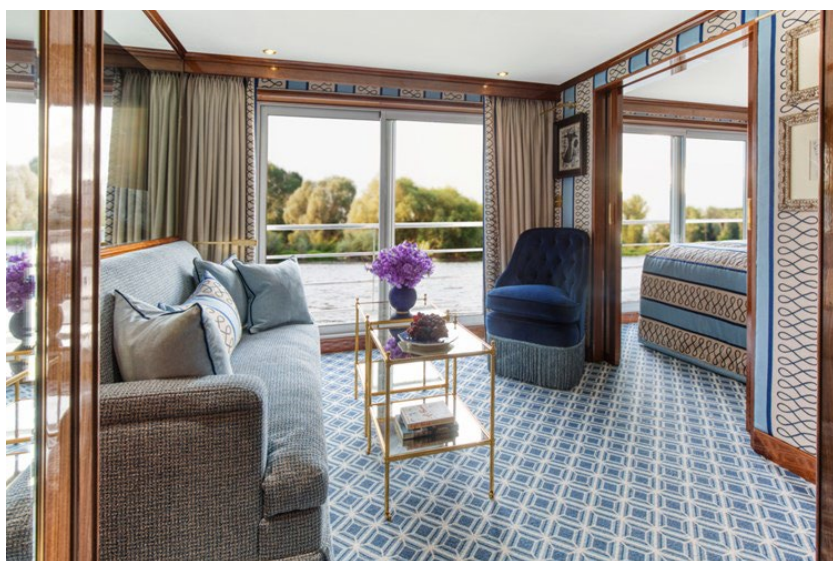
DISCOVER BURGUNDY & THE RHÔNE VALLEY WITH STONE EDGE FARM WINERY AND COURSEY GRAVES



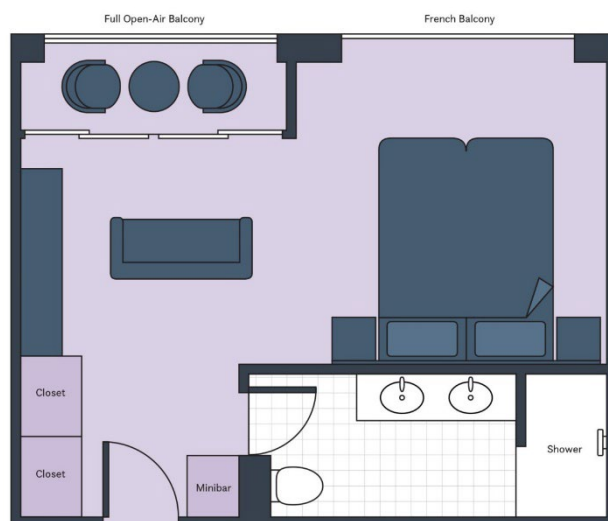
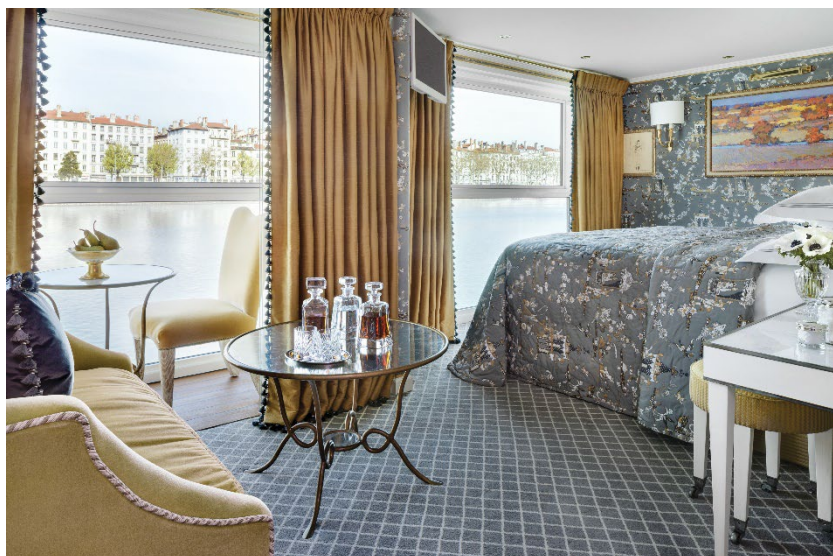
SS CATHERINE › 7 NIGHTS › LYON TO ARLES › APRIL 26 TO MAY 3, 2026

GRAND SUITE (410 SQ. FT.) \$14,898 per person*

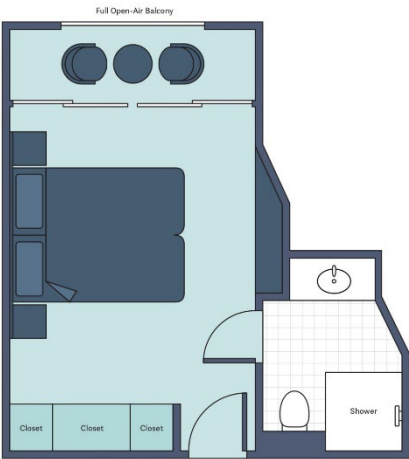
Note: Stateroom layouts shown below are not to scale.



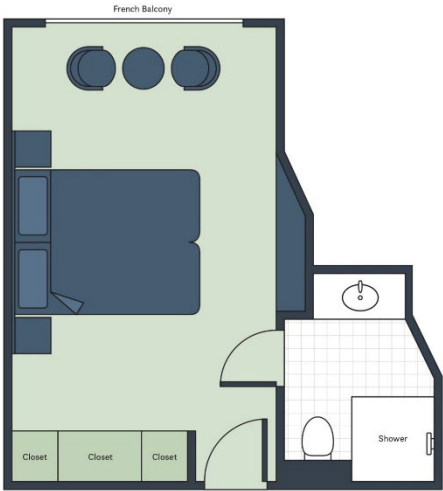
SUITE (305 SQ. FT.) \$11,298 per person*



DELUXE BALCONY (194 SQ. FT.) \$7,298 per person *



FRENCH BALCONY (194 SQ. FT.) \$6,798 per person *

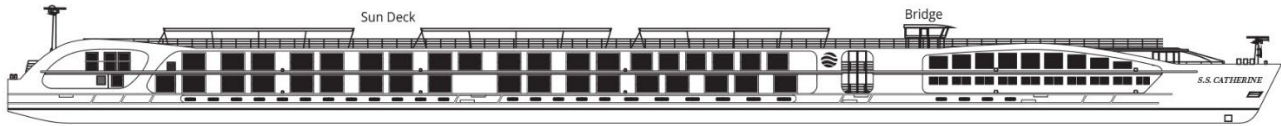


CLASSIC (162 SQ. FT.) \$5,498 per person *

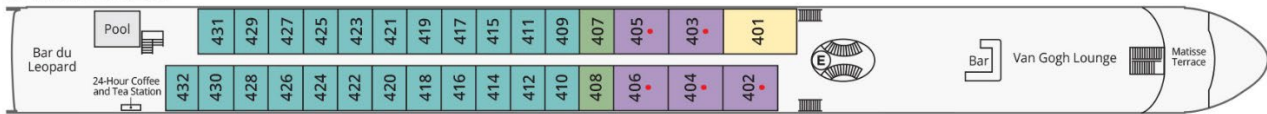


S.S. CATHERINE DECK PLAN

S.S. CATHERINE



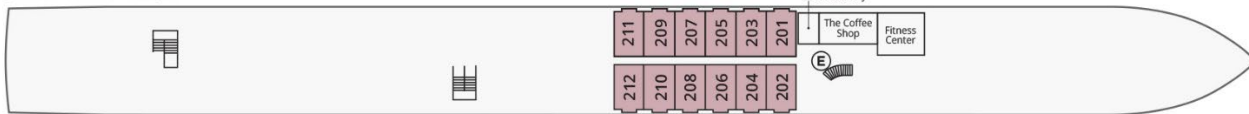
CAMARGUE DECK



AVIGNON DECK



SAINT REMY DECK



Grand Suite
 Suite
 Deluxe Balcony
 French Balcony
 Classic
 E Elevator
 Triple accommodation available

* Prices are per person, double occupancy, AND INCLUDE the Port Tax of \$240 per person for all categories.