

EXPLORE THE ENTICING DOURO WITH THE PETALUMA GAP WINEGROWERS ALLIANCE



Douro River Valley

ABOARD AMASINTRA • 7 NIGHTS • MAY 14 TO 21, 2027
PORTO • RÉGUA • BARCA D'ALVA • VEGA DE TERRÓN • PINHÃO • ENTRE-OS-RIOS • PORTO

Savor Your Journey Along the Douro River!

Rambling vineyards and charming native farms cling to the steep sides of the Douro River Valley, creating an incomparable backdrop to one of Europe's most unspoiled regions and to Port country—the world's oldest demarcated wine region. Sail roundtrip from Porto, the beautiful "City of Bridges"; visit Regua, the 'capital' of the Douro Valley; and marvel at Salamanca, the UNESCO-designated "Golden City." Taste wines from historic wineries and soak up the genuine beauty of one of Europe's most unadulterated landscapes. There is no better way to experience this journey than with your Petaluma Gap wine hosts!

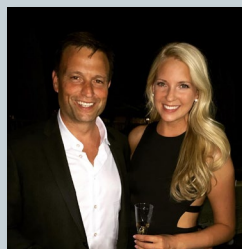
An Exclusive Experience with your Wine Hosts!

- Welcome Aboard Reception
- Three Wine Tasting Seminars with Petaluma Gap and Regional wines
- Three Wine/Food Pairing Dinners led by your Wine Hosts



Douro River Valley

MEET YOUR WINE HOSTS




Dan Whalen & Katie Honey
Owners & Operators




KELLER ESTATE
Ana Keller
Estate Director



Trombetta
FAMILY WINES
Rickey Trombetta Stancliff
Founder

877-651-7447 WINECLUB@EXPEDIACRUISES.COM

EXPLORE THE ENTICING DOURO WITH THE PETALUMA GAP WINEGROWERS ALLIANCE

YOUR CRUISE ITINERARY



Date	Destination	Activities/Shore Excursions
May 14	Porto	EMBARKATION
May 15	Régua	Mateus Palace & gardens visit
May 16	Vega de Terrón	Castelo Rodrigo tour with tasting of regional fare OR Castelo Rodrigo hike with tasting of regional fare
May 17	Vega de Terrón	Salamanca excursion
May 18	Pinhão	Quinta de Avesada lunch Local quinta wine tasting
May 19	Régua	Lamego tour and Bôlas tasting OR Holy Staircase hike and Bôlas tasting Lunch at a local quinta
May 20	Porto	"City of Bridges" tour OR Porto hike Port Wine Cellar Tasting Porto Illuminations cruise
May 21	Porto	DISEMBARKATION

Itinerary subject to change



Book Now for Best Selection!

Booked Exclusively Through:



877-651-7447

WineClub@ExpediaCruises.com



WHAT'S INCLUDED

- Deluxe accommodations in finely appointed staterooms aboard the AmaSintra
- Expertly guided shore excursions in every port with a variety of choices and activity levels
- Complimentary Wi-Fi access
- Fine dining, featuring all meals on board in the elegant Main Restaurant
- Unlimited wines, beer and soft drinks with every lunch and dinner on board
- Cocktail Reception, Welcome Dinner and Captain's Gala Dinner
- "Sip & Sail" daily cocktail hour with complimentary beer, wines and spirits



AmaSintra in Porto

**Save Up To \$500 pp When You Book By
January 31, 2026!**

Staterooms Starting at

\$5,878 \$5,378 per person

Includes the exclusive wine experience!

Terms & Conditions: All rates are per person in USD, cruise only inclusive of port charges, based on double occupancy in a Category E stateroom unless stated otherwise. Offer is not combinable with any other promotions/ discounts, is limited to availability and subject to termination without notice. Minimum of 40 guests required for the wine cruise to operate. By placing a deposit, you agree to the special terms of the wine cruise. Your fare includes an exclusive wine program operated independently from the cruise line. Penalties up to 100% apply. We recommend travel insurance to protect your vacation. Other restrictions may apply. Expedia Cruises reserves the right to revise any errors on the flyer; itinerary subject to change. For full terms and conditions contact Expedia Cruises – Wine Club Cruises. CST#2101270-40; Fla. Seller of Travel Ref. No. ST42527.