

Steven Kent Winery

Aboard AmaKristina • 7 Nights • March 25 to April 1, 2027

Note: Stateroom layouts shown below are not to scale.

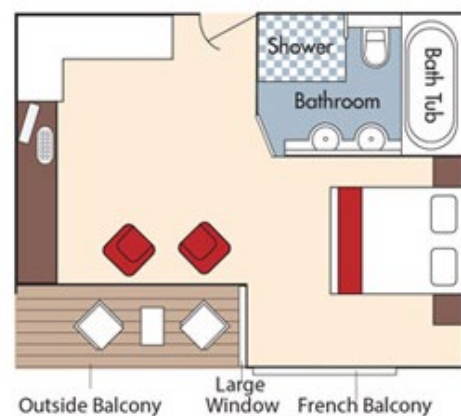
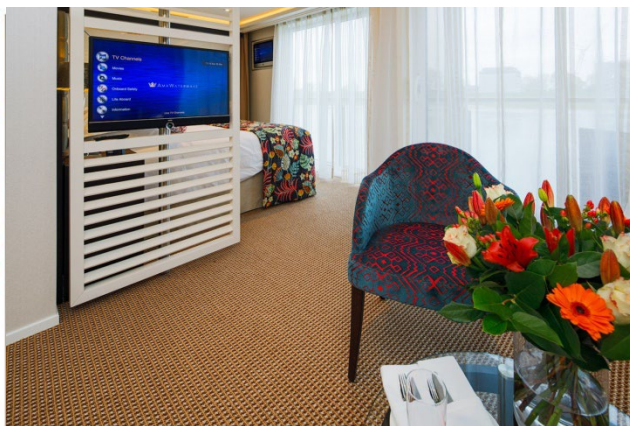
**Book by March 31, 2026
for this Special Pricing!**

Suite *Violin Deck*

French Balcony & Outside Balcony, 350 sq. ft.

Brochure Rate = ~~\$9,178 pp~~

Wine Cruise Rate = \$7,928 pp

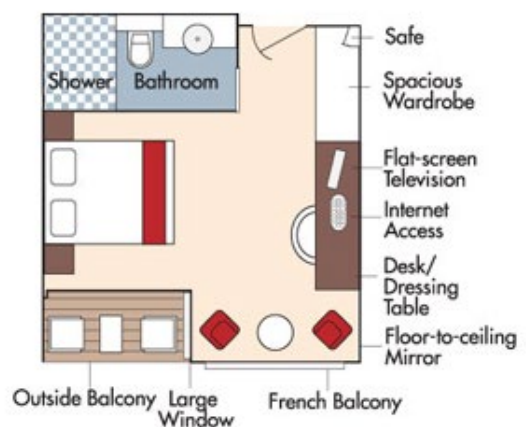


Category AA *Violin Deck*

French Balcony & Outside Balcony, 235 sq. ft.

Brochure Rate = ~~\$7,778 pp~~

Wine Cruise Rate = \$6,528 pp



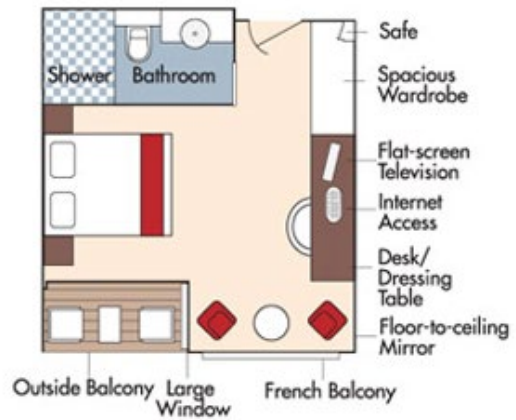


Category AB *Cello Deck*

French Balcony & Outside Balcony, 235 sq. ft.

Brochure Rate = ~~\$7,578~~ pp

Wine Cruise Rate = \$6,328 pp

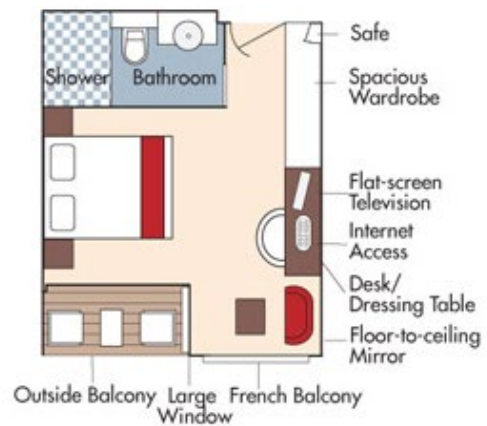


Category BA *Violin Deck*

French Balcony & Outside Balcony, 210 sq. ft.

Brochure Rate = ~~\$7,378~~ pp

Wine Cruise Rate = \$6,128 pp

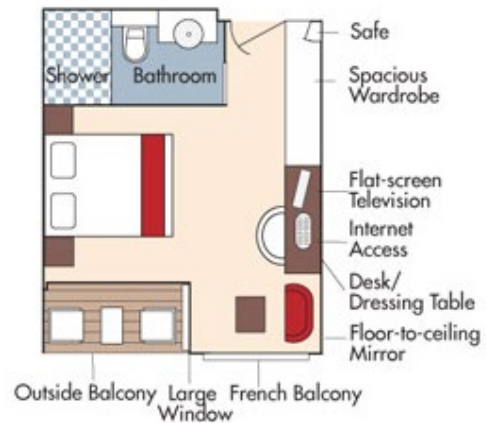


Category BB *Cello Deck*

French Balcony & Outside Balcony, 210 sq. ft.



Brochure Rate = ~~\$7,178 pp~~
Wine Cruise Rate \$5,928 pp

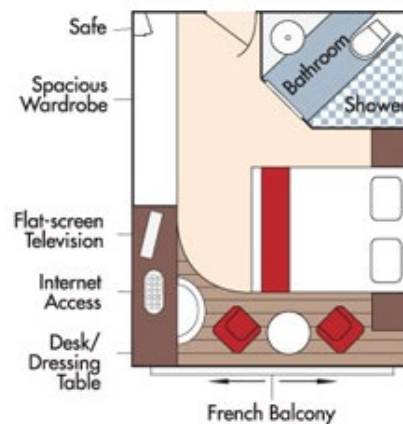


Category CA *Violin & Cello Deck*

French Balcony, 170 sq. ft.



Brochure Rate = ~~\$6,578 pp~~
Wine Cruise Rate = \$5,328 pp

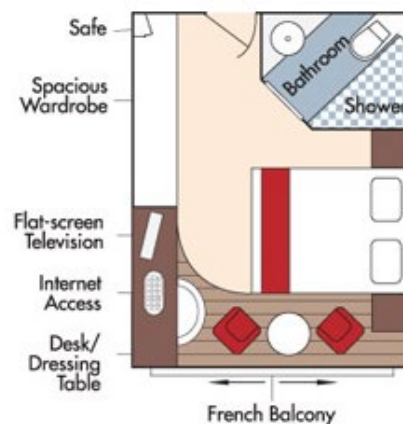


Category CB *Violin Deck*

French Balcony, 155 sq. ft.



Brochure Rate = ~~\$6,178 pp~~
Wine Cruise Rate = \$4,928 pp

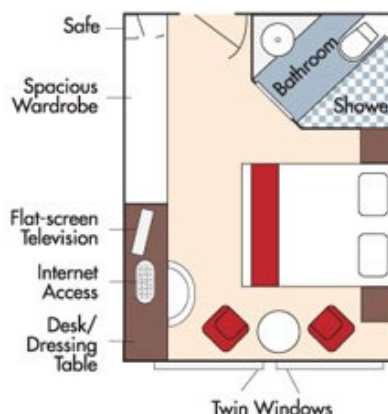


Fares listed are cruise-only, per person based on double occupancy and INCLUDE port charges of \$280 per person.

Category D *Piano Deck*
Fixed Windows, 160 sq. ft.



Brochure Rate = \$5,029 pp
Wine Cruise Rate = \$3,779 pp

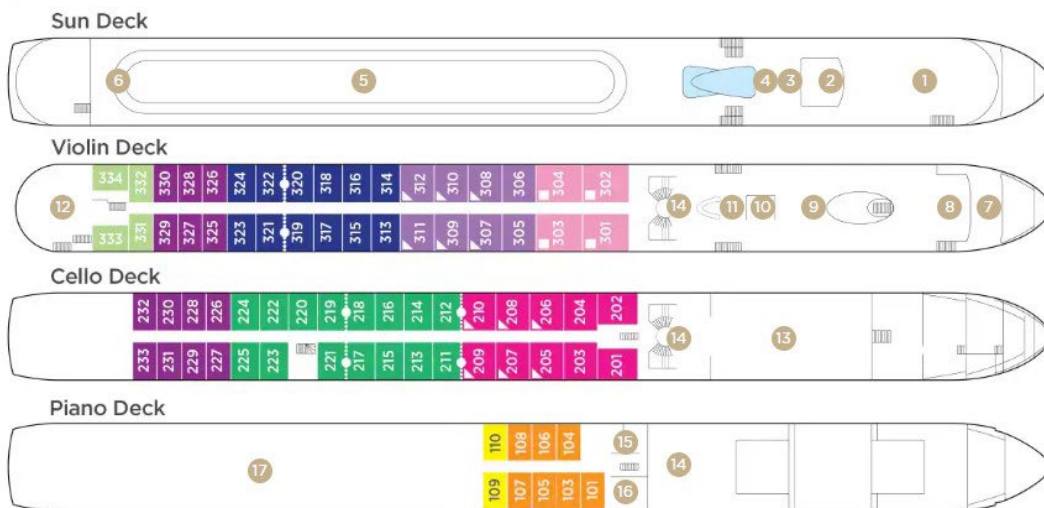


Category E *Piano Deck*
Fixed Windows, 160 sq. ft.

Brochure Rate = \$4,979 pp
Wine Cruise Rate = \$3,729 pp

AmaKristina
DECK PLAN

1	Lower Sun Deck
2	Navigation Bridge
3	Bicycles
4	Heated Pool
5	Sun Deck
6	Walking Track
7	Al Fresco Terrace
8	Observation Lounge
9	Main Lounge & Bar
10	Gift Shop
11	Reception
12	The Chef's Table Restaurant
13	Main Restaurant
14	Elevator
15	Massage & Hair Salon
16	Fitness Room
17	Crew Cabins



Note: Elevator reaches the Violin, Cello and Piano Deck (does not reach the Sun Deck).
..... Staterooms can become adjoining by request. ▲ Up to triple occupancy ■ Up to quadruple occupancy

SUITE	AA	AB	BA	BB	CA	CB	D	E
-------	----	----	----	----	----	----	---	---

Fares listed are cruise-only, per person based on double occupancy and INCLUDE port charges of \$280 per person.