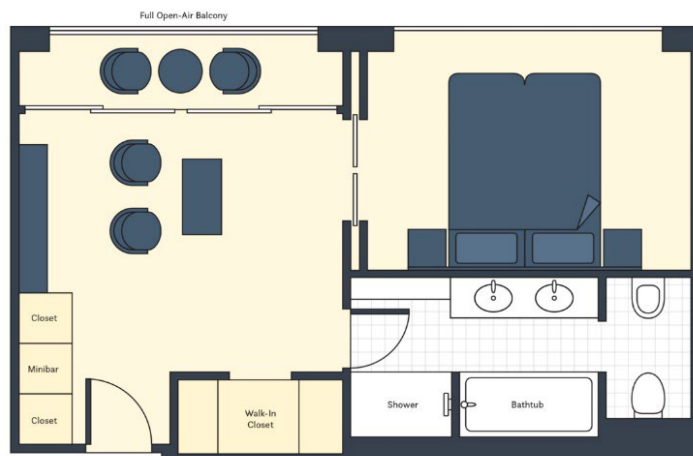


# DISCOVER BURGUNDY & THE RHÔNE VALLEY WITH STONE EDGE FARM WINERY AND COURSEY GRAVES

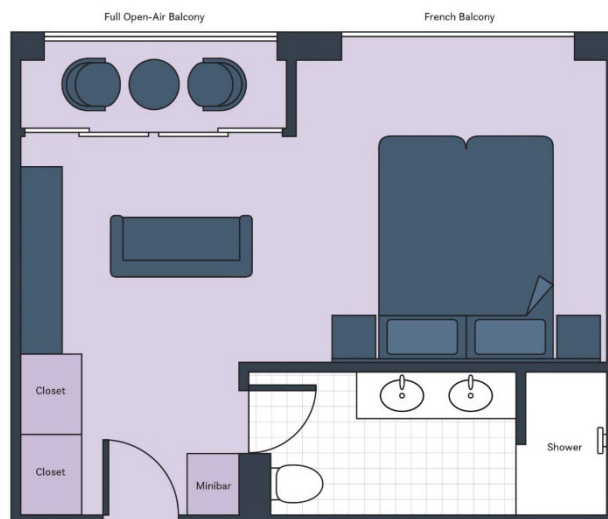
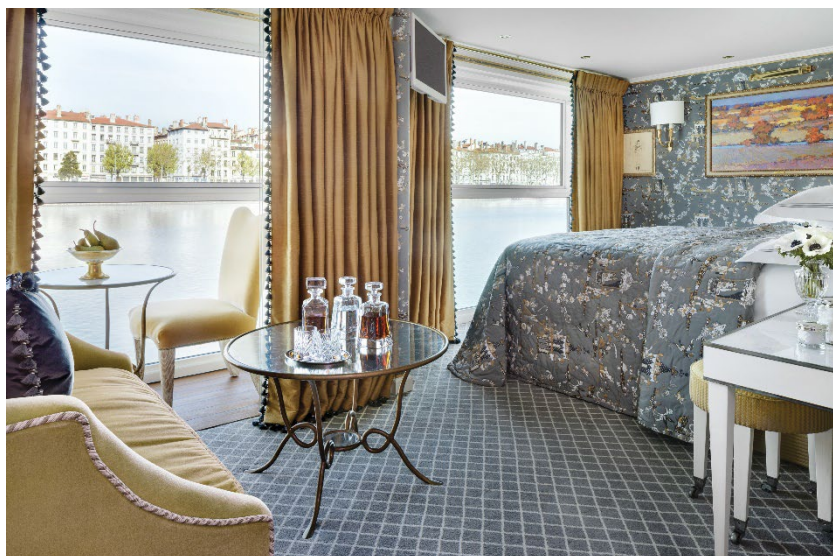


SS CATHERINE › 7 NIGHTS › LYON TO ARLES › APRIL 26 TO MAY 3, 2026

**GRAND SUITE (410 SQ. FT.)** ~~\$14,599~~ **\$13,478 per person** *Note: Stateroom layouts shown below are not to scale.*

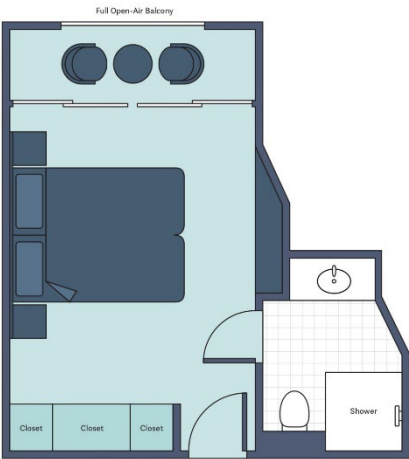


**SUITE (305 SQ. FT.)** ~~\$10,999~~ **\$10,238 per person\***

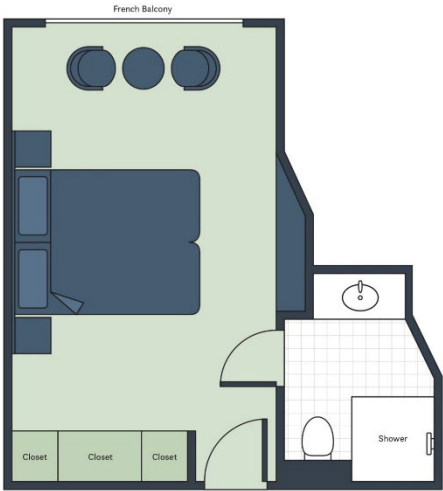




**DELUXE BALCONY (194 SQ. FT.) ~~\$6,999~~ \$6,638 per person \***



**FRENCH BALCONY (194 SQ. FT.) ~~\$6,499~~ \$6,188 per person \***

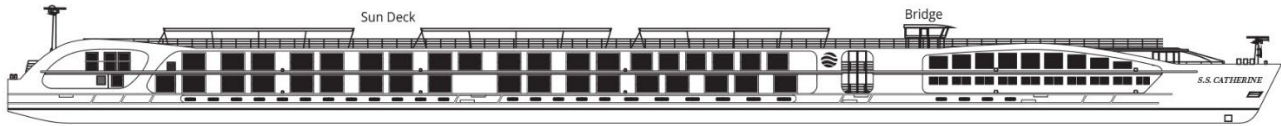


**CLASSIC (162 SQ. FT.) ~~\$5,199~~ \$5,018 per person \***

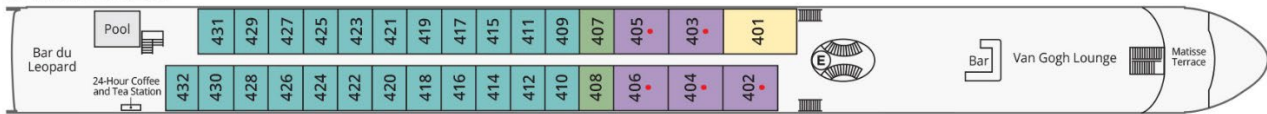


## S.S. CATHERINE DECK PLAN

### S.S. CATHERINE



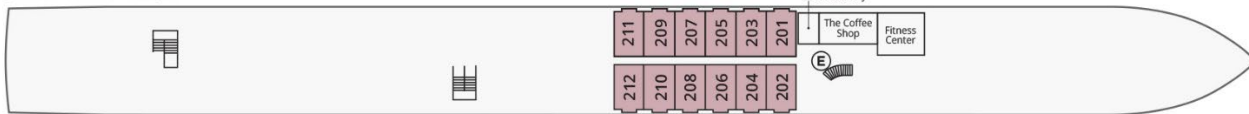
#### CAMARGUE DECK



#### AVIGNON DECK



#### SAINT REMY DECK



Grand Suite
  Suite
  Deluxe Balcony
  French Balcony
  Classic
 E Elevator
  Triple accommodation available

\* Prices are per person, double occupancy, AND INCLUDE the Port Tax of \$240 per person for all categories.