

# JOIN KEN BROWN WINES FOR AN ALL-INCLUSIVE ALASKAN CRUISE

Regent Seven Seas Explorer • Anchorage to Vancouver

7 Nights • June 10-17, 2026

**Book by July 31, 2025  
for this Special Pricing!**

## Stateroom Selection Guide

*Note: Stateroom layouts shown below are not to scale.*

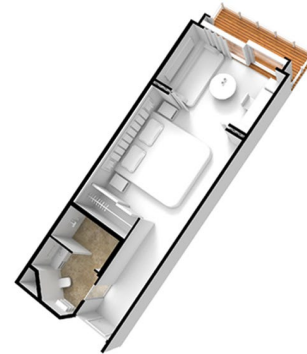


**Veranda Suite ~~\$8,699~~ \$6,399 pp**  
**Suite Size: Approx. 219 sq ft**  
**Balcony Size: Approx. 88 sq ft**  
**Category H**

Valet Laundry Service  
Unlimited Wi-Fi includes two logins per suite  
L'Occitane® Bath Amenities  
Interactive Flat-Screen Television and Direct-Dial Satellite Phone  
24-Hour Room Service

This suite is a wonderfully cozy retreat that includes a private balcony. In addition to a signature Elite Slumber™ bed, you'll enjoy amenities such as lavish bath products, an interactive flat-screen TV and plush bathrobe and slippers. The intimate sitting area includes a table that is the perfect size for a welcome bottle of Champagne and an in-suite breakfast. For your convenience, 24-hour room service is a phone call away.

Welcome Bottle of Champagne with Fresh Fruit Arrangement  
Vanity and Hair Dryer  
Regent Plush Bathrobes and Slippers  
Personalized In-Suite Mini-Bar Set-Up  
Shoe Shine Service

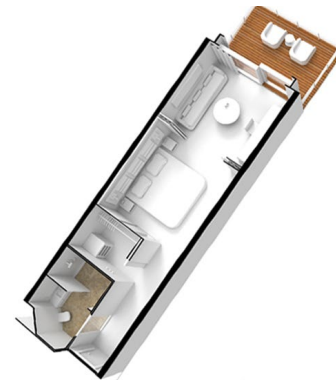


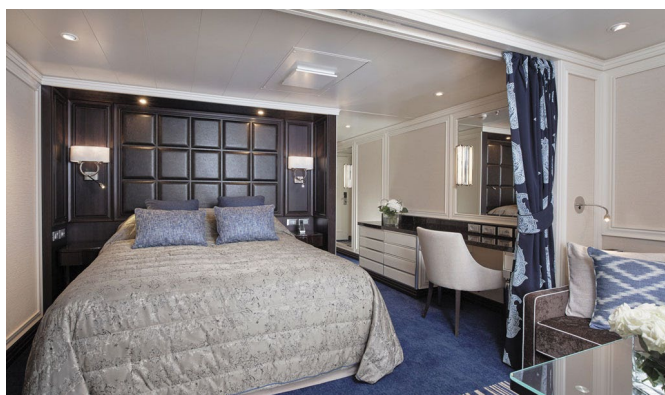
**Deluxe Veranda Suite G2 ~~\$8,899~~ \$6,599 pp**  
**Deluxe Veranda Suite G1 ~~\$9,049~~ \$6,749 pp**  
**Suite Size: Approx. 253 sq ft**  
**Balcony Size: Approx. 55 – 108 sq ft**

Valet Laundry Service  
Unlimited Wi-Fi includes two logins per suite  
L'Occitane® Bath Amenities  
Interactive Flat-Screen Television and Direct-Dial Satellite Phone  
24-Hour Room Service

Thoughtfully designed to maximize interior space and embrace the magnificent scenery outdoors, this suite is a joyful retreat. From the sitting area, admire the ocean views through the floor-to-ceiling windows, or better yet, take a seat outside on your private balcony to watch the world go by. Elegant finishes such as luxurious bedding and beautiful marble detailing in the bath further enhance your comfort.

Welcome Bottle of Champagne with Fresh Fruit Arrangement  
Vanity and Hair Dryer  
Regent Plush Bathrobes and Slippers  
Personalized In-Suite Mini-Bar Set-Up  
Shoe Shine Service





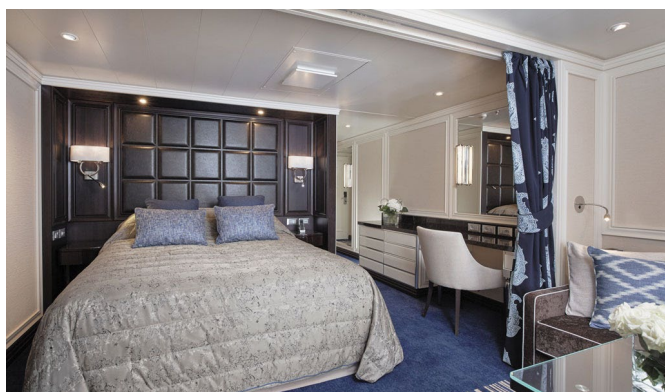
**Serenity Suite F2** ~~\$9,249~~ **\$6,999 pp**  
**Serenity Suite F1** ~~\$9,549~~ **\$7,149 pp**  
**Suite Size: Approx. 332 sq ft**  
**Balcony Size: Approx. 83 – 132 sq ft**

Valet Laundry Service  
 Unlimited Wi-Fi includes two logins per suite  
 L'Occitane® Bath Amenities  
 Interactive Flat-Screen Television and Direct-Dial Satellite Phone  
 24-Hour Room Service

With more than 400 square feet of space including a private balcony, this suite is an excellent choice if you want a little extra room. Even your sleeping accommodations are spacious, as the Elite Slumber™ bed is a European king-size and faces floor-to-ceiling windows that provide ocean views from your bed. A walk-in closet, dual sinks in the bathroom and wonderful bath amenities make it a pleasure to prepare for your day's adventures.



Welcome Bottle of Champagne with Fresh Fruit Arrangement  
 Vanity and Hair Dryer  
 Regent Plush Bathrobes and Slippers  
 Personalized In-Suite Mini-Bar Set-Up  
 Shoe Shine Service



**Concierge Suite E** ~~\$9,899~~ **\$7,599 pp**  
**Concierge Suite D** ~~\$40,499~~ **\$7,899 pp**  
**Suite Size: Approx. 332 sq ft**  
**Balcony Size: Approx. 83 – 132 sq ft**

Valet Laundry Service  
 1-Night Pre-Cruise Hotel Package Including:  
 - Ground Transfers  
 - Breakfast  
 - Portage  
 Unlimited Wi-Fi includes up to four logins per suite  
 15 Minutes of Ship-to-Shore Phone Time  
 L'Occitane® Jasmin & Bergamot Soaps, Shampoos and Lotions  
 Welcome Bottle of Champagne with Fresh Fruit Arrangement  
 In-Suite Mini-Bar Set-Up and Refill  
 24-Hour Room Service

In this superbly designed suite, enjoy once-in-a-lifetime views of the horizon from the comfort of your King-Sized Elite Slumber™ Bed as well as exclusive luxuries available only in suites at the Concierge level and higher. Your suite includes amenities such as an illy® espresso maker and cashmere blankets, perfect for use in the morning when you wish to sip coffee and enjoy an in-suite breakfast on your private balcony.



Priority Online Shore Excursions and Dining Reservations  
 10% Discount on Premium Wine and Liquor  
 5% savings on Pre- or Post-Cruise Hotel or Land Programs  
 5% savings on Regent Choice Shore Excursions  
 Regent Plush Bathrobes and Slippers  
 Binoculars, illy® Espresso Maker and Cashmere Blankets  
 Vanity and Hair Dryer  
 Interactive Flat-Screen Television With Extensive Media Library  
 Direct Dial Satellite Phone  
 Shoe Shine Service  
 Complimentary Tote Bag





**Penthouse Suite C** ~~\$42,299~~ **\$9,999 pp**  
**Penthouse Suite B** ~~\$42,599~~ **\$10,249 pp**  
**Penthouse Suite A** ~~\$42,799~~ **\$10,499 pp**  
**Suite Size: Approx. 450 sq ft**  
**Balcony Size: Approx. 111 – 176 sq ft**

The luxurious suite has been carefully designed to maximize space and comfort. Relax on your private balcony and indulge in your lavish bath amenities as you recharge and ready yourself for new adventures in the next port of call. This suite also includes priority online reservations for shore excursions and dining, and you're encouraged to call on the services of a personal butler for special requests.

1-Night Pre-Cruise Hotel Package Including:

- Ground Transfers
- Breakfast
- Porterage

Unlimited Wi-Fi includes up to four logins per suite

15 Minutes of Ship-to-Shore Phone Time

Guerlain & L'Occitane® Jasmin & Bergamot Soaps, Shampoos and Lotions

Personal Butler

Welcome Bottle of Champagne with Fresh Fruit Arrangement

Complimentary Pressing on First Night

In-Suite Mini-Bar Set-Up and Refill

24-Hour Room Service

Priority Online Shore Excursions and Dining Reservations

10% Discount on Premium Wine and Liquor

5% savings on Pre- or Post-Cruise Hotel or Land Programs

5% savings on Regent Choice Shore Excursions

Selection of Bed Pillow Styles

Regent Plush Bathrobes and Slippers

Daily Canapés

Personalized Stationery

BOSE® SoundLink Mini II Bluetooth Speaker

Binoculars, illy® Espresso Maker and Cashmere Blankets

Vanity and Hair Dryer

Interactive Flat-Screen Television With Extensive Media Library

Direct Dial Satellite Phone

Shoe Shine Service

Essentials Including Men's Unscented Shaving Kit, Facial Wipes,

Sewing Kit, Emory Board, Stain Remover and Hand Sanitizer

Complimentary Tote Bag



**Seven Seas Suite** ~~\$15,599~~ **\$13,299 pp**  
**Suite Size: Approx. 557 sq ft**  
**Balcony Size: Approx. 237 sq ft**  
**Category SS**

This suite welcomes you with soothing colors, pleasing artwork and comfortable furnishings. Relax in the sitting area after an exciting day ashore and enjoy the selection of fresh canapés delivered by your personal butler. Then retreat to your private balcony to watch the ever-changing vistas and ponder your next destination.

Valet Laundry Service

1-Night Pre-Cruise Hotel Package Including:

- Ground Transfers
- Breakfast
- Porterage

Unlimited Wi-Fi includes up to four logins per suite

15 Minutes of Ship-to-Shore Phone Time

Choice of Guerlain, Acqua di Parma and L'Occitane® Jasmin & Bergamot Soaps

Personal Butler

Priority boarding on Embarkation Day with Suite Access at 1:00 pm

Welcome Bottle of Champagne

Complimentary Pressing on First Night

In-Suite Mini-Bar Set-Up and Refill

24-Hour Room Service

Priority Online Shore Excursions and Dining Reservations

10% Discount on Premium Wine and Liquor

5% savings on Pre- or Post-Cruise Hotel or Land Programs

5% savings on Regent Choice Shore Excursions

Selection of Bed Pillow Styles

Selection of Fig and Tea Leaves Bath Salts

Regent Plush Bathrobes and Slippers

Daily Canapés

Personalized Stationery

BOSE® SoundLink Mini II Bluetooth Speaker

Elegant Weather Clock

Binoculars, illy® Espresso Maker and Cashmere Blankets

Vanity and Hair Dryer

Interactive Flat-Screen Television with Extensive Media Library

Direct Dial Satellite Phone

Shoe Shine Service

Essentials Including Men's Unscented Shaving Kit and more

Complimentary Tote Bag



**Explorer Suite ~~\$17,899~~ \$15,599 pp**  
**Suite Size: Approx. 665 sq ft**  
**Balcony Size: Approx. 166 – 263 sq ft**  
**Category ES**

Valet Laundry Service  
 1-Night Pre-Cruise Hotel Package Including:  
 - Ground Transfers  
 - Breakfast  
 - Portage  
 Unlimited Wi-Fi includes up to four logins per suite  
 15 Minutes of Ship-to-Shore Phone Time  
 Choice of Guerlain, Acqua di Parma and L'Occitane® Jasmin & Bergamot Soaps  
 Personal Butler  
 Welcome Bottle of Premium Champagne  
 Priority boarding on Embarkation Day with Suite Access at 1:00 pm  
 Welcome Letter from President and General Manager  
 Complimentary Pressing on First Night  
 Personalized In-Suite Full-Liquor Bar Set-Up  
 1 Sumptuous In-Suite Caviar Service  
 24-Hour Room Service  
 Priority Online Shore Excursions and Dining Reservations  
 10% Discount on Premium Wine and Liquor

One look at this suite and you'll be uncorking a bottle of Veuve Clicquot Champagne and toasting your good fortune. A soothing color palette, attention to detail and soothing lighting invite you to unwind in style. The subdued elegance continues with a resplendent private bedroom and one-and-a-half bathrooms, where marble and stone details complement the scents of a variety of lavish soaps, shampoos and lotions.



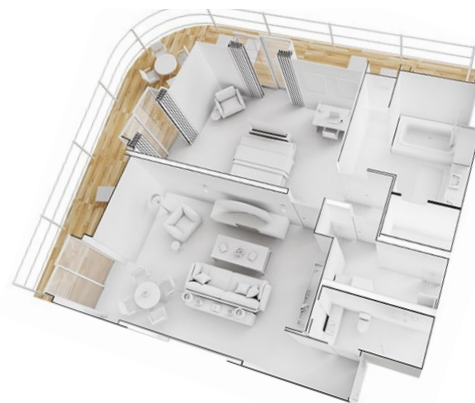
5% savings on Pre- or Post-Cruise Hotel or Land Programs  
 5% savings on Regent Choice Shore Excursions  
 Selection of Bed Pillow Styles  
 Selection of Fig and Tea Leaves Bath Salts  
 Regent Plush Bathrobes and Slippers  
 Daily Canapés  
 Personalized Stationery  
 Delivery of Up to Three Daily Newspapers  
 BOSE® SoundLink Mini II Bluetooth Speaker  
 World Atlas and Elegant Weather Clock  
 Binoculars, illy® Espresso Maker and Cashmere Blankets  
 Bath Scale  
 Vanity and Hair Dryer  
 Interactive Flat-Screen Television with Extensive Media Library  
 Direct Dial Satellite Phone  
 Shoe Shine Service  
 Essentials Including Men's Unscented Shaving Kit and more  
 Complimentary Tote Bag



**Grand Suite ~~\$20,699~~ \$18,399 pp**  
**Suite Size: Approx. 854 – 1,013 sq ft**  
**Balcony Size: Approx. 277 – 916 sq ft**  
**Category GS**

1-Night Pre-Cruise Hotel Package Including:  
 - Ground Transfers  
 - Breakfast  
 - Portage  
 Unlimited Wi-Fi includes up to four logins per suite  
 15 Minutes of Ship-to-Shore Phone Time  
 Valet Laundry Service  
 Choice of Guerlain, Acqua di Parma and L'Occitane® Jasmin & Bergamot Soaps  
 Guerlain Fragrance and Spongelle Buffer  
 Personal Butler  
 Priority Check-in on embarkation day with suite access at Noon  
 Welcome Bottle of Premium Champagne  
 Complimentary Pressing on First Night  
 VIP Status to Include Dinner with a Senior Officer  
 Welcome Letter from President and General Manager  
 Complimentary Cocktail Party for 8  
 Personalized In-Suite Full-Liquor Bar Set-Up  
 1 Sumptuous In-Suite Caviar Service  
 Guaranteed Reservation Each Night in Specialty Restaurant of Your Choice  
 5% savings on Pre- or Post-Cruise Hotel or Land Programs  
 Complimentary 25-Minute Personal Fitness Session at the Serene Spa & Wellness™ Fitness Center  
 24-Hour Room Service with Specialty Restaurant Selections During Dining Hours

Step into the richness of an emerald green dining area perfectly ensconced within a spacious, sumptuous living room. Just outside is a private balcony with a table and chairs, perfect for in-suite breakfast. The private bedroom is large and inviting, its soothing color palette perfect for a peaceful night's rest on your King-Size Elite Slumber™ Bed. Two full baths make it a perfect space for entertaining new friends on the high seas. The suite pictured may differ from the suite booked, as layouts and designs vary by ship, deck, and suite location.



Priority Online Shore Excursions and Dining Reservations  
 10% Discount on Premium Wine and Liquor  
 5% savings on Regent Choice Shore Excursions  
 Selection of Bed Pillow Styles  
 Selection of Fig and Tea Leaves Bath Salts  
 Regent Plush Bathrobes and Slippers  
 Daily Canapés  
 Luxe Fruit Arrangement and Chocolate Leonidas  
 Tea Forte Set-Up  
 Personalized Stationery  
 Complimentary Shore Excursion Bag  
 Delivery of Up to Three Daily Newspapers  
 BOSE® SoundLink Mini II Bluetooth Speaker  
 World Atlas and Elegant Weather Clock  
 Binoculars, illy® Espresso Maker and Cashmere Blankets  
 Bath Scale  
 Vanity and Hair Dryer  
 Interactive Flat-Screen Television with Extensive Media Library  
 Direct Dial Satellite Phone  
 Shoe Shine Service  
 Essentials Including Men's Unscented Shaving Kit and more  
 Complimentary Tote Bag

Cruise price only, including exclusive wine experience. Rates quoted are per person based on double occupancy. Terms and Conditions apply.





**Signature Suite ~~\$24,099~~ \$21,799 pp**  
**Suite Size: Approx. 1,064 – 1,114 sq ft**  
**Balcony Size: Approx. 831 – 994 sq ft**  
**Category SG**

You'll find Park Avenue chic onboard Seven Seas Explorer® in this extravagant, stylish suite. A rich color palette, the finest fabrics and a grand piano create sophisticated comfort, while a personal butler will happily assist with both ordinary and special requests. With two spacious bedrooms, two-and-a-half baths, a large living room and a wrap-around private balcony, this suite is perfectly suited to host gatherings of new friends.

1-Night Pre-Cruise Hotel Package Including:

- Ground Transfers
- Breakfast
- Portage

Unlimited Wi-Fi includes up to four logins per suite

15 Minutes of Ship-to-Shore Phone Time

Valet Laundry Service

Choice of Guerlain, Acqua di Parma and L'Occitane® Jasmin & Bergamot Soaps

Guerlain Fragrance and Spongelle Buffer

Personal Butler

Welcome Bottle of Premium Champagne

Priority Check-in on embarkation day with suite access at Noon

Complimentary Pressing on First Night

VIP Status to Include Dinner with a Senior Officer

Welcome Letter from President and General Manager

Complimentary Cocktail Party for 8

Personalized In-Suite Full-Liquor Bar Set-Up

1 Sumptuous In-Suite Caviar Service

Guaranteed Reservation Each Night in Specialty Restaurant of Your Choice

Complimentary 25-Minute Personal Fitness Session at the Serene Spa & Wellness™ Fitness Center

24-Hour Room Service with Specialty Restaurant Selections During Dining Hours

Priority Online Shore Excursions and Dining Reservations

10% Discount on Premium Wine and Liquor

5% savings on Pre- or Post-Cruise Hotel or Land Programs

5% savings on Regent Choice Shore Excursions

Selection of Bed Pillow Styles

Selection of Fig and Tea Leaves Bath Salts

Regent Plush Bathrobes and Slippers

Daily Canapés

Luxe Fruit Arrangement and Chocolate Leonidas

Tea Forte Set-Up

Personalized Stationery

Complimentary Shore Excursion Bag

Delivery of Up to Three Daily Newspapers

BOSE® SoundLink Mini II Bluetooth Speaker

World Atlas and Elegant Weather Clock

Binoculars, illy® Espresso Maker and Cashmere Blankets

Bath Scale

Vanity and Hair Dryer

Interactive Flat-Screen Television with Extensive Media Library

Direct Dial Satellite Phone

Shoe Shine Service

Essentials Including Men's Unscented Shaving Kit and more

Complimentary Tote Bag



**Regent Suite: Not Available**  
**Suite Size: Approx. 3,026 sq ft**  
**Balcony Size: Approx. 1,417 sq ft**  
**Category RS**

Incomparable craftsmanship and meticulous attention to detail are evident everywhere – from the suite's unique design choices, such as rare works of art, to grand features like an in-suite spa retreat and Steinway piano. The only thing to rival the luxurious interior that includes two magnificent bedrooms is the spectacular ocean view from private balconies that include a Tresse Minipool high atop the ship.

Personal Car and Guide to Explore Ashore  
 Daily Serene Spa & Wellness™ Services with Priority Reservations  
 Access to The Study, A Private Dining Room for Up To 12 Guests  
 Choice of Guerlain, Acqua di Parma and L'Occitane® Jasmin & Bergamot Soaps  
 Guerlain Fragrance and Spongelle Buffer  
 Selection of Aromatic Suite Fragrances by Dr. Vranjes  
 Spa Accessories and Spongology Collection  
 Cristina Azario Cashmere Throw  
 1-Night Pre-Cruise Hotel Package Including:  
 - Ground Transfers  
 - Breakfast  
 - Portage  
 Unlimited Wi-Fi includes up to four logins per suite  
 15 Minutes of Ship-to-Shore Phone Time  
 Selection of Fig and Tea Leaves Bath Salts  
 Personal Butler  
 Priority Check-in on embarkation day with suite access at Noon  
 Complimentary Pressing on First Night  
 Welcome Bottle of Premium Champagne  
 VIP Status to Include Dinner with a Senior Officer  
 Welcome Letter from President and General Manager  
 Complimentary Cocktail Party for 8  
 Personalized In-Suite Full-Liquor Bar Set-Up  
 1 Sumptuous In-Suite Caviar Service  
 Guaranteed Reservation Each Night in Specialty Restaurant of Your Choice  
 Complimentary 25-Minute Personal Fitness Session at the Serene Spa & Wellness™ Fitness Center

24-Hour Room Service with Specialty Restaurant Selections During Dining Hours  
 Priority Online Shore Excursions and Dining Reservations  
 10% Discount on Premium Wine and Liquor  
 5% savings on Pre- or Post-Cruise Hotel or Land Programs  
 5% savings on Regent Choice Shore Excursions  
 Preferred Selection of Luxurious Bed Linens and Pillow Menu  
 Regent Plush Bathrobes and Slippers  
 Daily Canapés  
 Luxe Fruit Arrangement and Chocolate Leonidas  
 Tea Forte Set-Up  
 Personalized Stationery  
 Complimentary Shore Excursion Bag  
 Delivery of Up to Three Daily Newspapers  
 BOSE® SoundLink Mini II Bluetooth Speaker  
 World Atlas and Elegant Weather Clock  
 Binoculars, illy® Espresso Maker and Cashmere Blankets  
 Bath Scale  
 Vanity and Hair Dryer  
 Interactive Flat-Screen Television with Extensive Media Library  
 Direct Dial Satellite Phone  
 Shoe Shine Service  
 Essentials Including Men's Unscented Shaving Kit and more  
 Complimentary Tote Bag