

# CRUISE THROUGH BURGUNDY & PROVENCE WITH THREE STICKS WINES



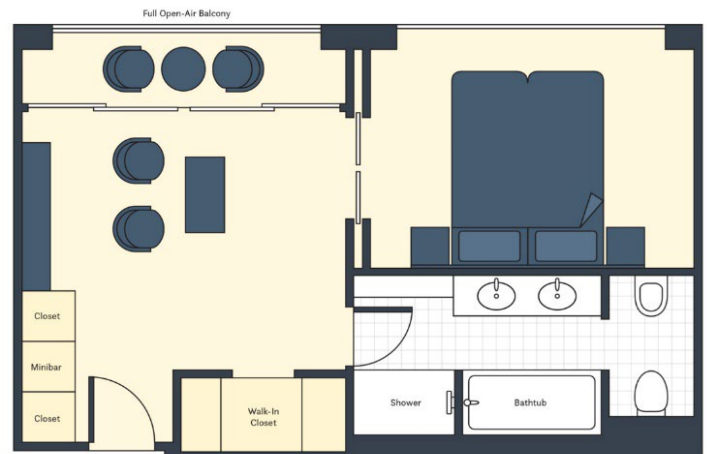
**Book Now for Best Selection!**  
**Get special pricing if you book**  
**by May 31, 2025!**

SS CATHERINE › 7 NIGHTS › LYON TO ARLES › JUNE 21-28, 2026

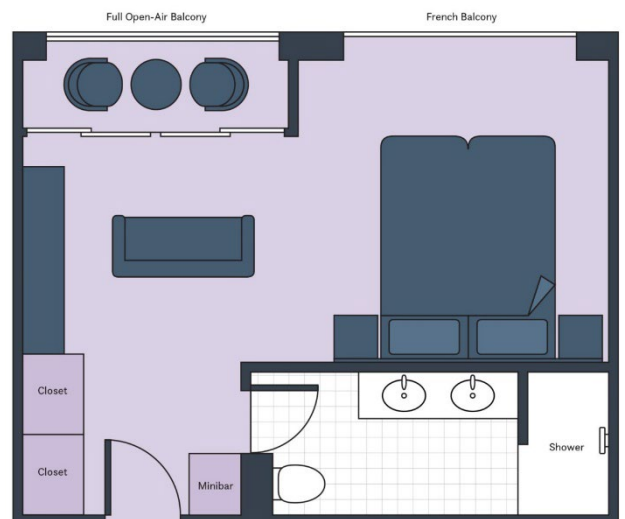
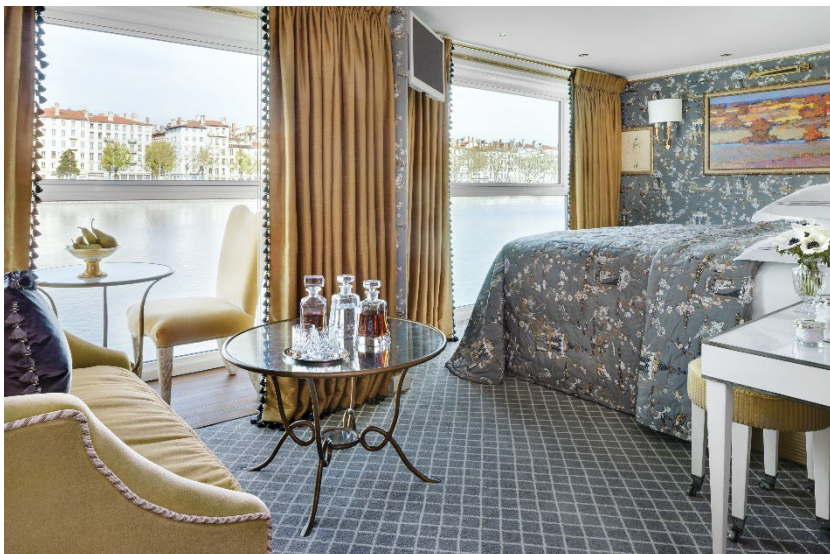
**GRAND SUITE (410 SQ. FT.) ~~\$14,599~~ \$13,478 per person\***



*Note: Stateroom layouts shown below are not to scale.*

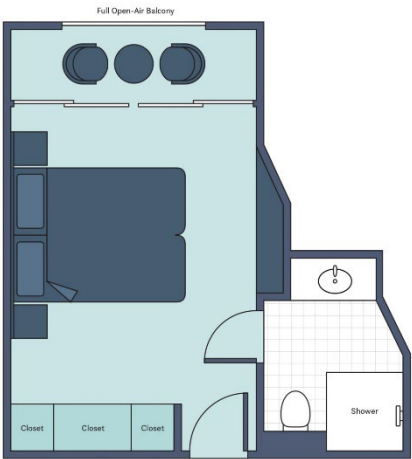


**SUITE (305 SQ. FT.) ~~\$10,999~~ \$10,238 per person\***

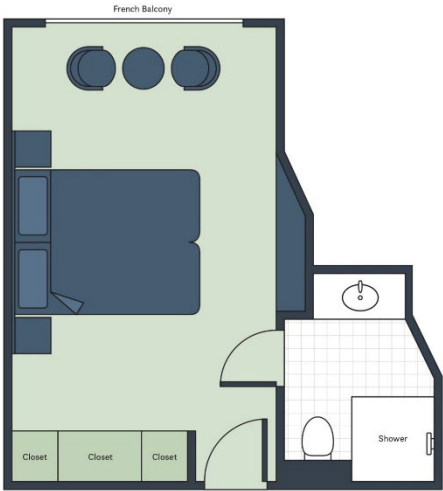




**DELUXE BALCONY (194 SQ. FT.) ~~\$6,999~~ \$6,638 per person\***



**FRENCH BALCONY (194 SQ. FT.) ~~\$6,499~~ \$6,188 per person\***

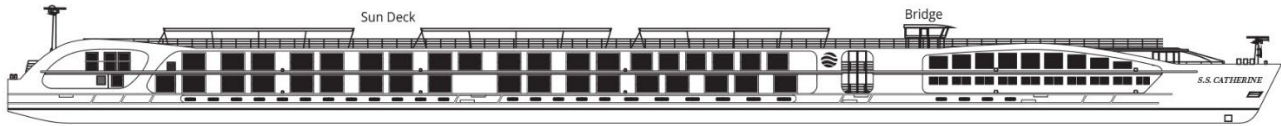


**CLASSIC (162 SQ. FT.) ~~\$5,199~~ \$5,018 per person\***

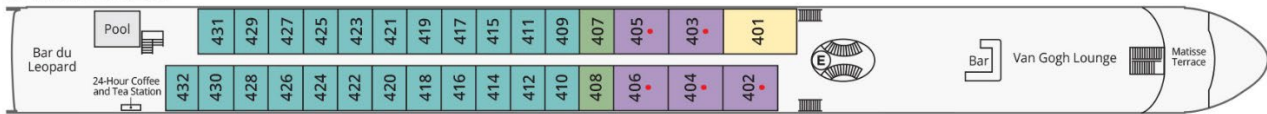


## S.S. CATHERINE DECK PLAN

### S.S. CATHERINE



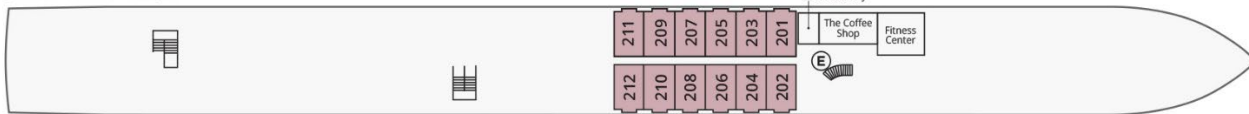
#### CAMARGUE DECK



#### AVIGNON DECK



#### SAINT REMY DECK



Grand Suite
  Suite
  Deluxe Balcony
  French Balcony
  Classic
 E Elevator
 • Triple accommodation available

\* Prices are per person, double occupancy, AND INCLUDE the Port Tax of \$240 per person for all categories.