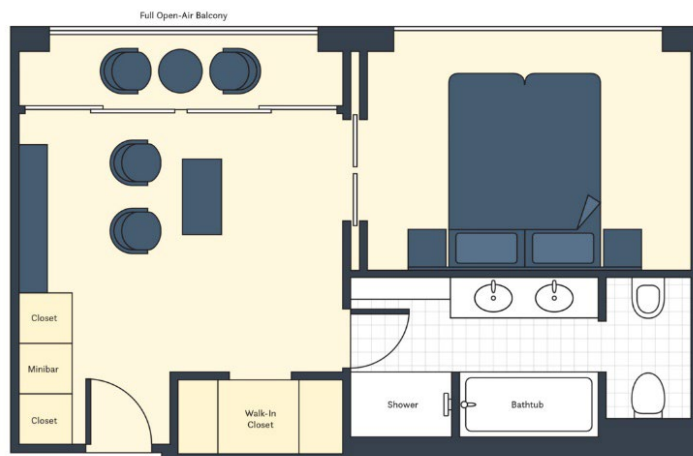


DISCOVER BURGUNDY & THE RHÔNE VALLEY WITH STONE EDGE FARM WINERY AND COURSEY GRAVES

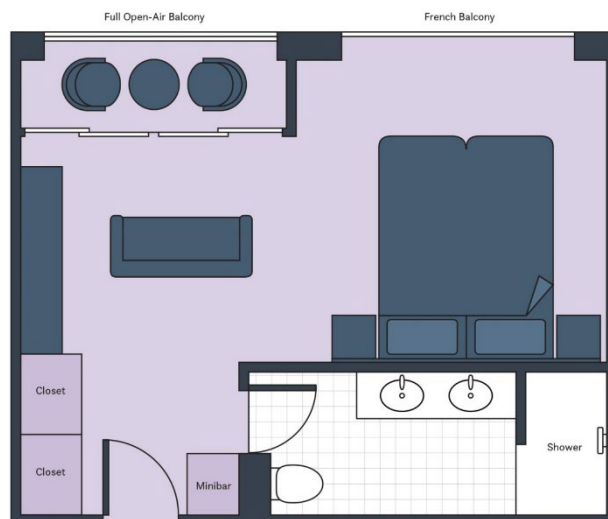
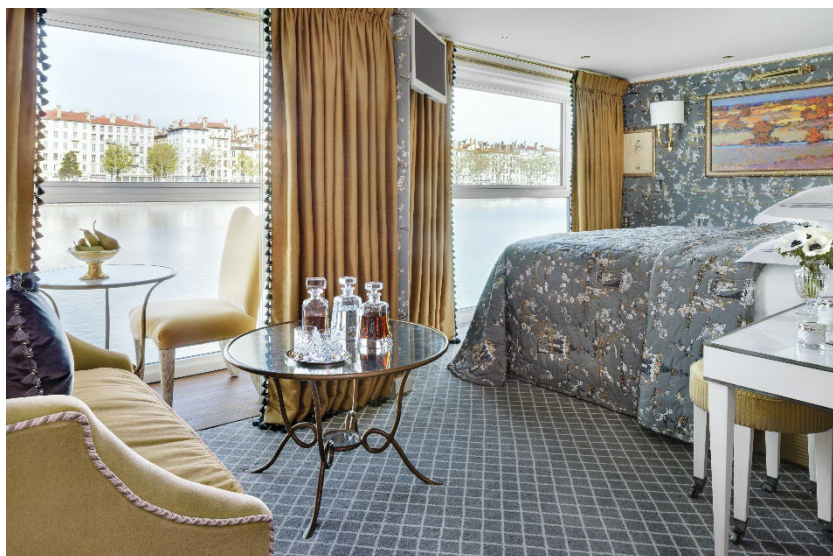


SS CATHERINE › 7 NIGHTS › LYON TO ARLES › APRIL 26 TO MAY 3, 2026

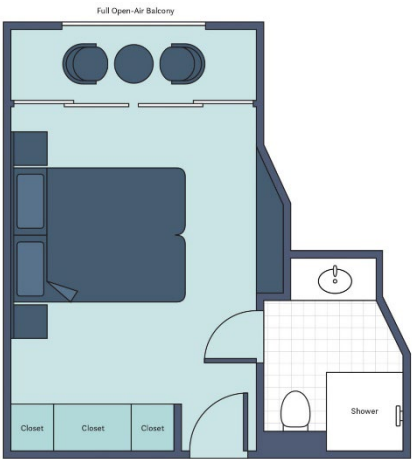
GRAND SUITE (410 SQ. FT.) ~~\$14,599~~ **\$13,478 per person** *Note: Stateroom layouts shown below are not to scale.*



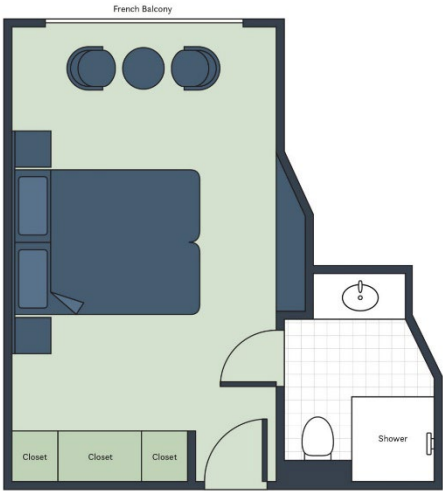
SUITE (305 SQ. FT.) ~~\$10,999~~ **\$10,238 per person***



DELUXE BALCONY (194 SQ. FT.) ~~\$6,999~~ \$6,638 per person *



FRENCH BALCONY (194 SQ. FT.) ~~\$6,499~~ \$6,188 per person *

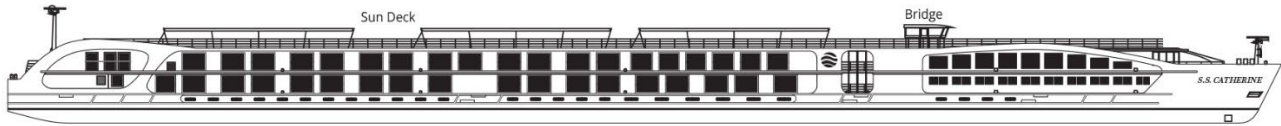


CLASSIC (162 SQ. FT.) ~~\$5,199~~ \$5,018 per person *

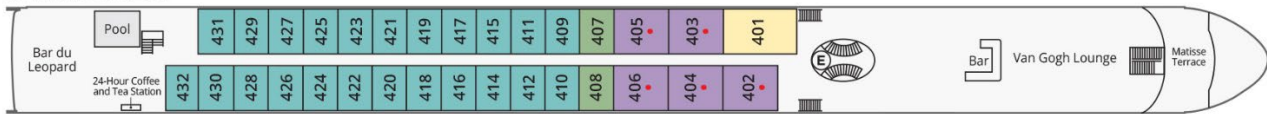


S.S. CATHERINE DECK PLAN

S.S. CATHERINE



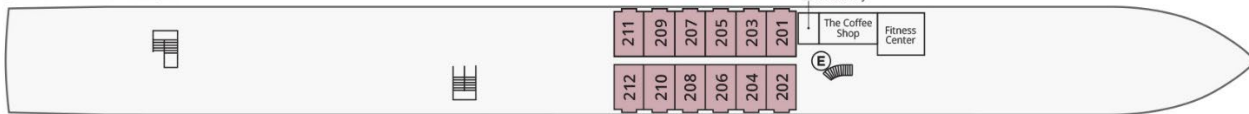
CAMARGUE DECK



AVIGNON DECK



SAINT REMY DECK



Grand Suite
 Suite
 Deluxe Balcony
 French Balcony
 Classic
 E Elevator
 • Triple accommodation available

* Prices are per person, double occupancy, AND INCLUDE the Port Tax of \$240 per person for all categories.