



Special Rates when you book by May 31, 2025!

RIVER CRUISE FOR WINE LOVERS

Matthiasson Winery

Aboard AmaBella • 7 Nights • June 9 to 16, 2025

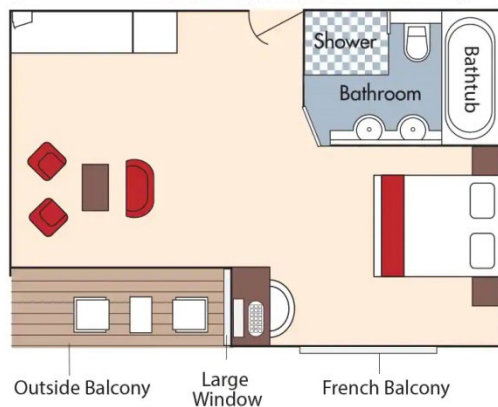
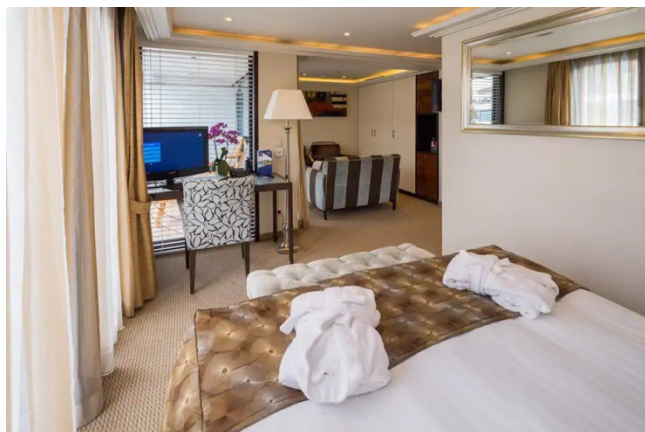
Budapest • Vienna • Weissenkirchen • Dürnstein • Melk • Grein • Linz • Passau • Vilshofen

Note: Stateroom layouts shown below are not to scale.



Suite, Violin Deck
French Balcony & Outside Balcony, 350 sq. ft.

Brochure Fare \$8,129 pp
Your rate \$7,879 pp



CAT. AA, Violin Deck
French Balcony & Outside Balcony, 235 sq. ft.

Brochure Fare \$6,829 pp
Your rate \$6,579 pp



Fares listed are cruise-only, per person based on double occupancy inclusive of port charges of \$231 per person.



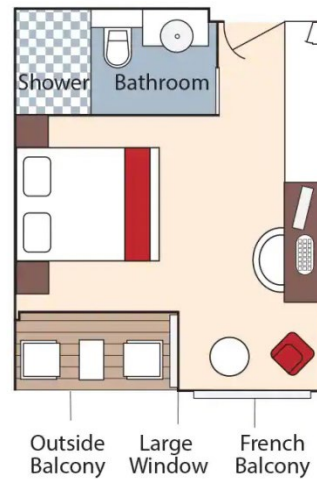
CAT. AB, Cello Deck
French Balcony & Outside Balcony, 235 sq. ft.

Brochure Fare ~~\$6,629~~ pp
 Your rate **\$6,379** pp



CAT. BA, Violin Deck
French Balcony & Outside Balcony, 210 sq. ft.

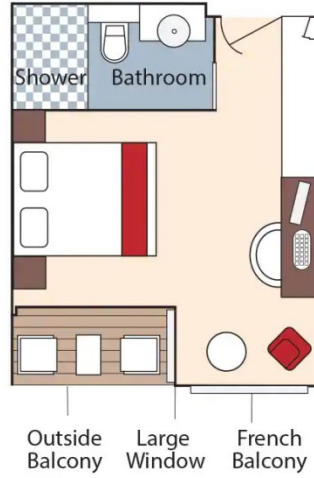
Brochure Fare ~~\$6,429~~ pp
 Your rate **\$6,179** pp





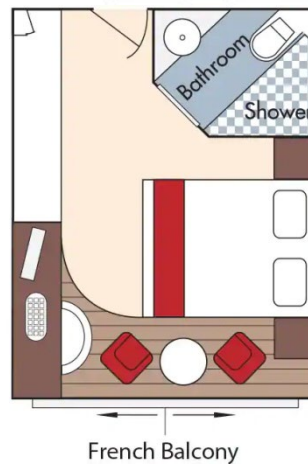
CAT. BB, Cello Deck
French Balcony & Outside Balcony, 210 sq. ft.

Brochure Fare ~~\$6,229~~ pp
 Your rate **\$5,979** pp



CAT. C, Violin & Cello Deck
French Balcony, 170 sq. ft.

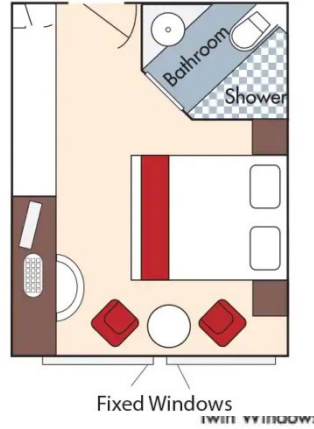
Brochure Fare ~~\$5,629~~ pp
 Your rate **\$5,379** pp





CAT. D, Piano Deck
Fixed Windows, 170 sq. ft.

Brochure Fare \$4,529 pp
Your rate \$4,279 pp

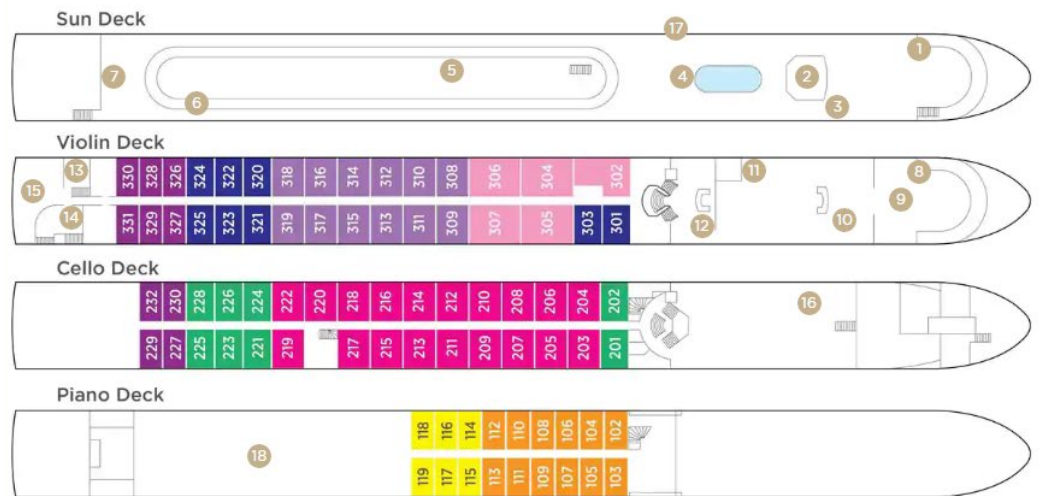


CAT. E, Piano Deck
Fixed Windows, 170 sq. ft.

Brochure Fare \$4,230 pp
Your rate \$3,980 pp

AmaBella DECK PLAN

| | |
|----|-----------------------------|
| 1 | Lower Sun Deck |
| 2 | Navigation Bridge |
| 3 | Bicycles |
| 4 | Heated Pool |
| 5 | Sun Deck |
| 6 | Walking Track |
| 7 | Putting Green |
| 8 | Bow Seating Area |
| 9 | Observation Lounge |
| 10 | Main Lounge & Bar |
| 11 | Gift Shop |
| 12 | Reception |
| 13 | Massage & Hair Salon |
| 14 | Fitness Room |
| 15 | The Chef's Table Restaurant |
| 16 | Main Restaurant |
| 17 | Elevator |
| 18 | Crew Cabins |



Stateroom Categories



Fares listed are cruise-only, per person based on double occupancy inclusive of port charges of \$231 per person.