

# SAVOR A WINE CRUISE THROUGH FRANCE

WITH CHENOWETH WINES, KOBLER ESTATE, & DONELAN FAMILY WINES!

Book by July 31, 2025

and SAVE

\$750 per person!

7 Nights • July 23 to 30, 2026

Arles to Lyon – Aboard AmaKristina

Note: Stateroom layouts shown below are not to scale.

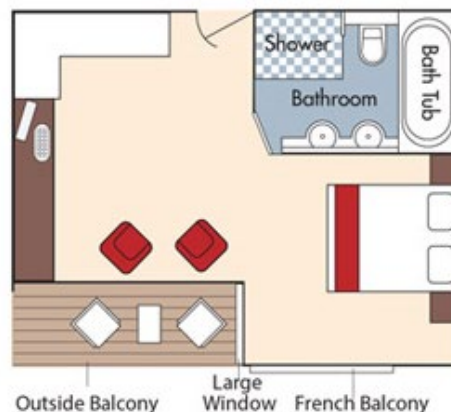
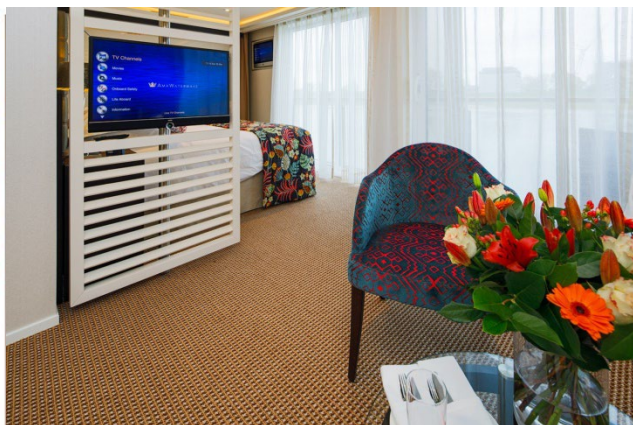


## Suite *Violin Deck*

French Balcony & Outside Balcony, 350 sq. ft.

Brochure Rate ~~\$9,344 pp~~

Wine cruise rate \$8,594 pp

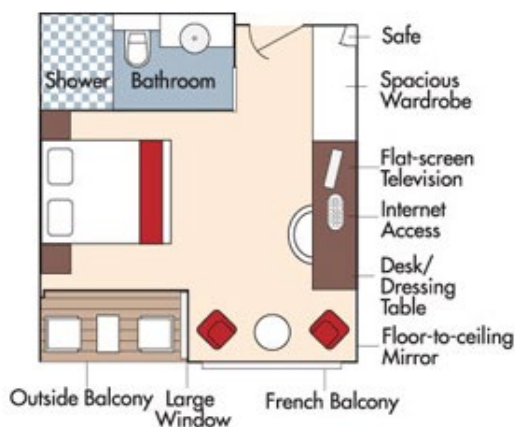


## Category AA *Violin Deck*

French Balcony & Outside Balcony, 235 sq. ft.

Brochure Rate ~~\$8,044 pp~~

Wine cruise rate \$7,294 pp



Fares listed are cruise-only, per person based on double occupancy inclusive of port charges of \$246.75 per person and include the exclusive wine package.

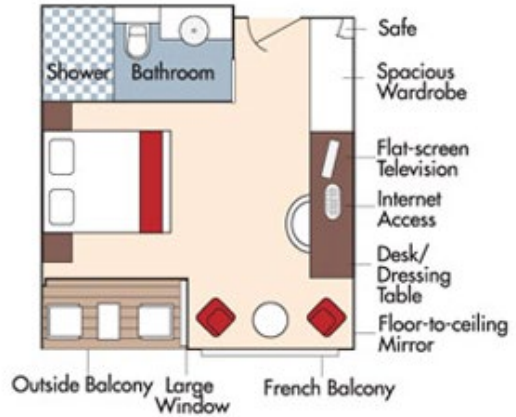


### Category AB *Cello Deck*

French Balcony & Outside Balcony, 235 sq. ft.

Brochure Rate ~~\$7,844~~ pp

Wine cruise rate \$7,094 pp

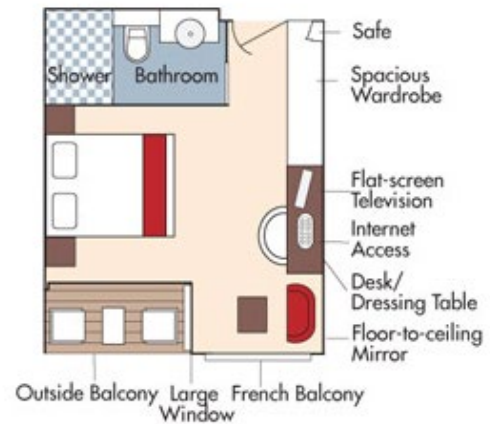


### Category BA *Violin Deck*

French Balcony & Outside Balcony, 210 sq. ft.

Brochure Rate ~~\$7,644~~ pp

Wine cruise rate \$6,894 pp





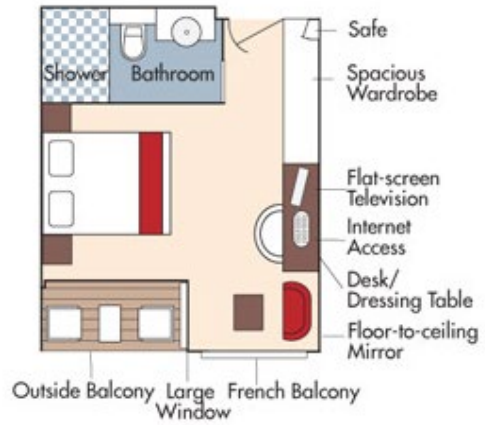


### Category BB *Cello Deck*

French Balcony & Outside Balcony, 210 sq. ft.

Brochure Rate ~~\$7,444 pp~~

Wine cruise rate \$6,694 pp

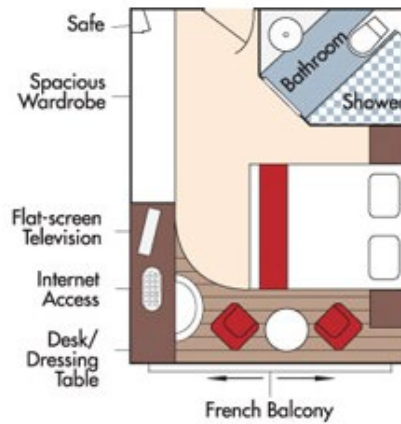


### Category CA *Violin & Cello Deck*

French Balcony, 170 sq. ft.

Brochure Rate ~~\$6,844 pp~~

Wine cruise rate \$6,094 pp

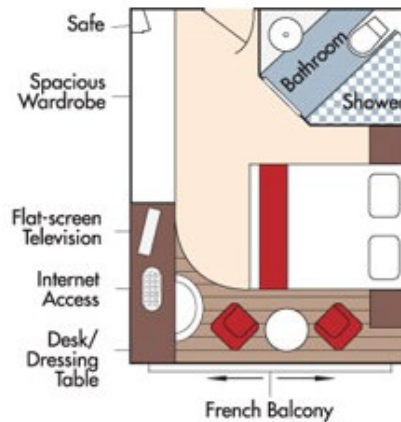


### Category CB *Violin Deck*

French Balcony, 155 sq. ft.

Brochure Rate ~~\$6,444 pp~~

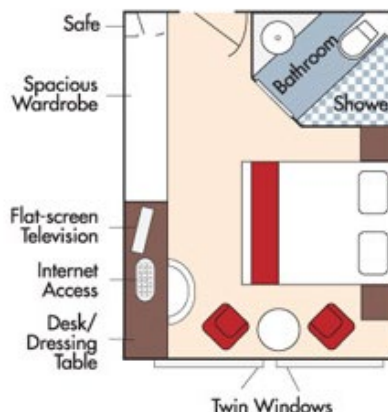
Wine cruise rate \$5,694 pp



**Category D** *Piano Deck*  
Fixed Windows, 160 sq. ft.



Brochure Rate ~~\$5,644~~ pp  
Wine cruise rate \$4,894 pp

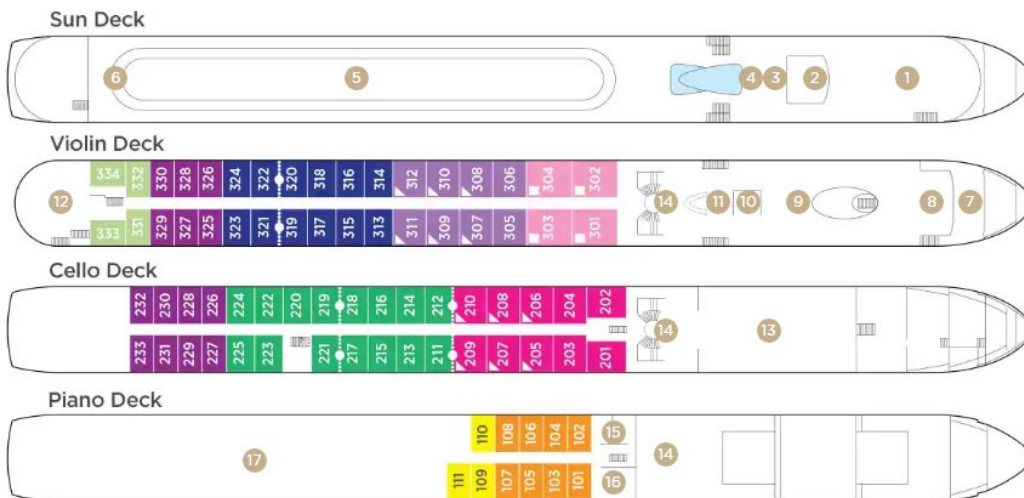


**Category E** *Piano Deck*  
Fixed Windows, 160 sq. ft.

Brochure Rate ~~\$5,345~~ pp  
Wine cruise rate \$4,595 pp

*AmaKristina*  
**DECK PLAN**

- 1 Lower Sun Deck
- 2 Navigation Bridge
- 3 Bicycles
- 4 Heated Pool
- 5 Sun Deck
- 6 Walking Track
- 7 Al Fresco Terrace
- 8 Observation Lounge
- 9 Main Lounge & Bar
- 10 Gift Shop
- 11 Reception
- 12 The Chef's Table Restaurant
- 13 Main Restaurant
- 14 Elevator
- 15 Massage & Hair Salon
- 16 Fitness Room
- 17 Crew Cabins



*Note: Elevator reaches the Violin, Cello and Piano Deck (does not reach the Sun Deck).*

.....  
Staterooms can become adjoining by request.

▲  
Up to triple occupancy

Stateroom Categories



Fares listed are cruise-only, per person based on double occupancy inclusive of port charges of \$246.75 per person and include the exclusive wine package.