

# Support Guatemala Cruise Through Bordeaux With H2OpenDoors, Alliance for Smiles & Rotaplast

## AmaDolce • October 16, 2025

Bordeaux • Libourne • Blaye • Bourg • Cussac-Fort-Medoc • Cadillac • Bordeaux

Save \$500 per Stateroom when you  
book by January 31, 2025



Suite, Violin Deck  
French Balcony, 255 sq. ft.

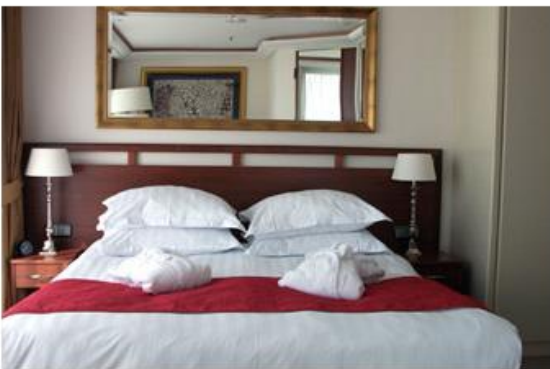


Special Cruise Rate:

~~\$7,738 pp~~ Now \$7,488 pp



CAT. A+, Violin Deck  
French Balcony, 225 sq. ft.

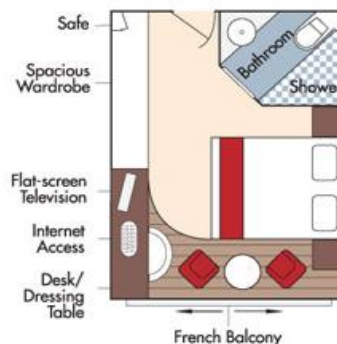


Special Cruise Rate:

Sold out



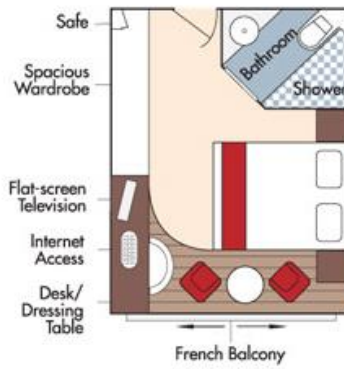
CAT. A, Violin Deck  
French Balcony, 170 sq. ft.



Special Cruise Rate:

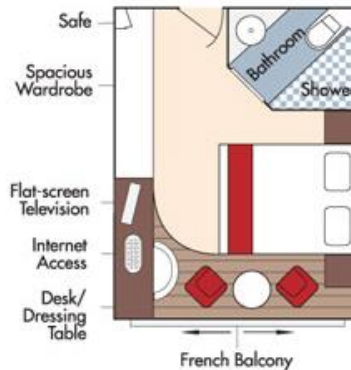
~~\$6,438 pp~~ Now \$6,188 pp

CAT. B, Violin & Cello Deck  
French Balcony, 170 sq. ft.



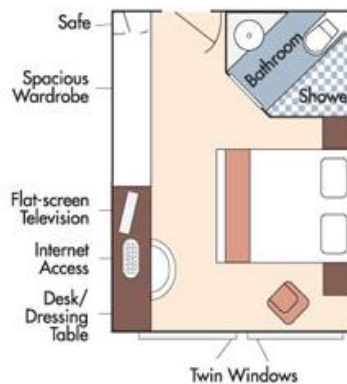
Special Cruise Rate:  
~~\$6,338 pp~~ Now \$6,088 pp

CAT. C, Violin & Cello Deck  
French Balcony, 170 sq. ft.



Special Cruise Rate:  
~~\$6,038 pp~~ Now \$5,788 pp

CAT. E, Piano Deck  
Fixed Windows, 170 sq. ft.



CAT. D, Piano Deck  
Fixed Windows, 170 sq. ft.

Cat. D - Special Cruise Rate:  
~~\$4,938 pp~~ Now \$4,688 pp

Cat. E - Special Cruise Rate:  
~~\$4,639 pp~~ Now \$4,389 pp

## AmaDolce Deck Plan



Fares listed are cruise-only, per person based on double occupancy AND INCLUDE port charges of \$240 per person.