



Special Fares When You Book by
March 31, 2025

RIVER CRUISE FOR WINE LOVERS

Sbragia Family Vineyards

Aboard AmaBella • 7 Nights • March 31 to April 7, 2025

Budapest, Hungary to Giurgiu, Romania

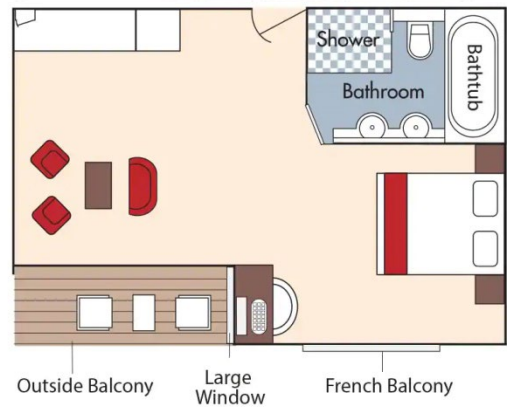
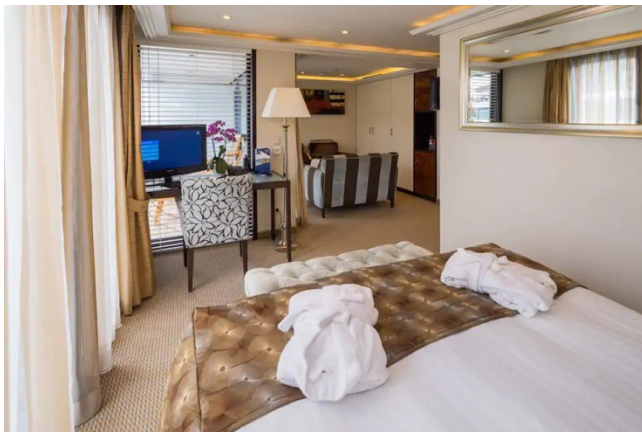
Note: Stateroom layouts shown below are not to scale.



Suite, Violin Deck
French Balcony & Outside Balcony, 350 sq. ft.

Brochure Fare \$7,429 pp

Wine Cruise Rate \$7,179 pp



CAT. AA, Violin Deck
French Balcony & Outside Balcony, 235 sq. ft.

Brochure Fare \$6,129 pp

Wine Cruise Rate \$5,879 pp



Fares listed are cruise-only, per person based on double occupancy inclusive of port charges of \$231 per person.



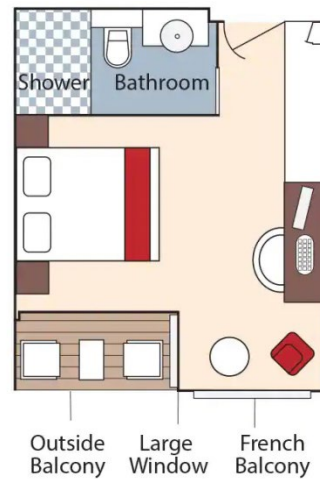
CAT. AB, Cello Deck
French Balcony & Outside Balcony, 235 sq. ft.

Brochure Fare ~~\$5,929~~ pp
 Wine Cruise Rate \$5,679 pp



CAT. BA, Violin Deck
French Balcony & Outside Balcony, 210 sq. ft.

Brochure Fare ~~\$5,729~~ pp
 Wine Cruise Rate \$5,479 pp

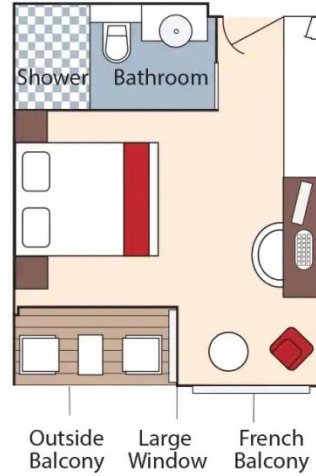




CAT. BB, Cello Deck
French Balcony & Outside Balcony, 210 sq. ft.



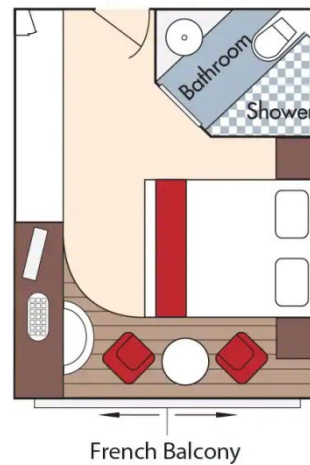
Brochure Fare ~~\$5,529~~ pp
 Wine Cruise Rate \$5,279 pp



CAT. C, Violin & Cello Deck
French Balcony, 170 sq. ft.



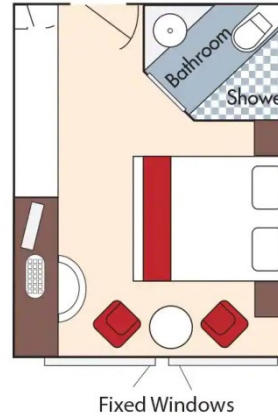
Category C
 Brochure Fare ~~\$4,929~~ pp
 Wine Cruise Rate \$4,679 pp





CAT. D, Piano Deck
Fixed Windows, 170 sq. ft.

Brochure Fare \$3,829 pp
Wine Cruise Rate \$3,579 pp



CAT. E, Piano Deck
Fixed Windows, 170 sq. ft.

Brochure Fare \$3,530 pp
Wine Cruise Rate \$3,280 pp

AmaBella DECK PLAN

1	Lower Sun Deck
2	Navigation Bridge
3	Bicycles
4	Heated Pool
5	Sun Deck
6	Walking Track
7	Putting Green
8	Bow Seating Area
9	Observation Lounge
10	Main Lounge & Bar
11	Gift Shop
12	Reception
13	Massage & Hair Salon
14	Fitness Room
15	The Chef's Table Restaurant
16	Main Restaurant
17	Elevator
18	Crew Cabins



Stateroom Categories



Fares listed are cruise-only, per person based on double occupancy inclusive of port charges of \$231 per person.