



Special Rates when you book by March 31, 2025!

RIVER CRUISE FOR WINE LOVERS

Matthiasson Winery

Aboard AmaBella • 7 Nights • June 9 to 16, 2025

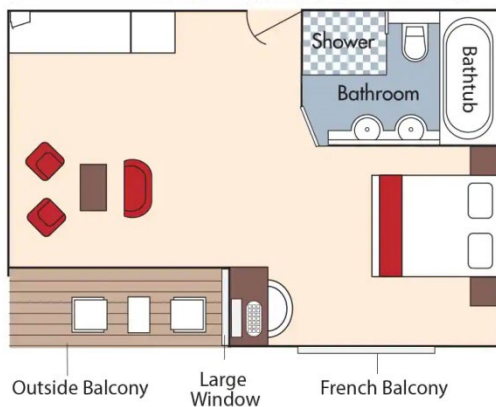
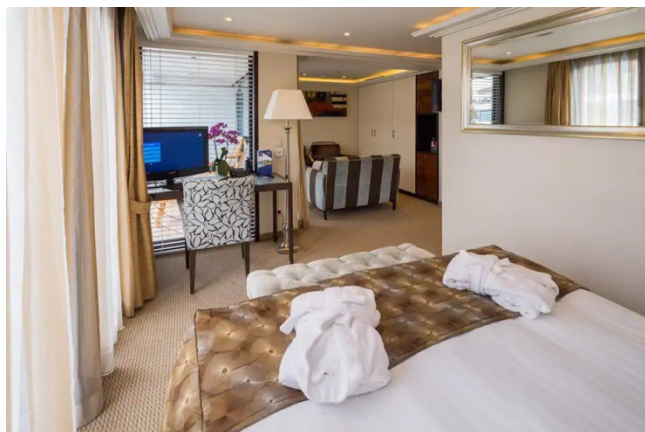
Budapest • Vienna • Weissenkirchen • Dürnstein • Melk • Grein • Linz • Passau • Vilshofen

Note: Stateroom layouts shown below are not to scale.



Suite, Violin Deck
French Balcony & Outside Balcony, 350 sq. ft.

Brochure Fare ~~\$8,129~~ pp
Your rate **\$7,879** pp



CAT. AA, Violin Deck
French Balcony & Outside Balcony, 235 sq. ft.

Brochure Fare ~~\$6,829~~ pp
Your rate **\$6,579** pp



Fares listed are cruise-only, per person based on double occupancy inclusive of port charges of \$231 per person.



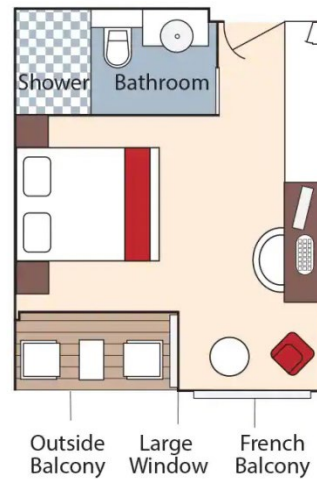
CAT. AB, Cello Deck
French Balcony & Outside Balcony, 235 sq. ft.

Brochure Fare ~~\$6,629~~ pp
 Your rate **\$6,379** pp



CAT. BA, Violin Deck
French Balcony & Outside Balcony, 210 sq. ft.

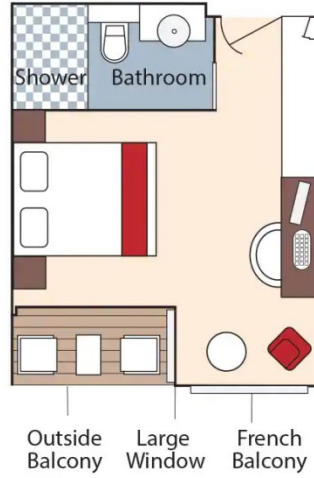
Brochure Fare ~~\$6,429~~ pp
 Your rate **\$6,179** pp





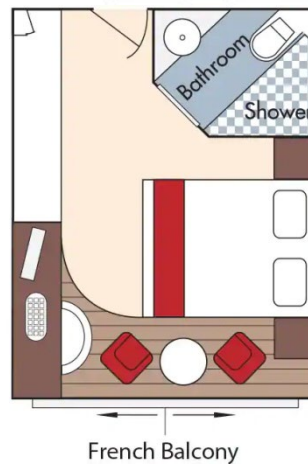
CAT. BB, Cello Deck
French Balcony & Outside Balcony, 210 sq. ft.

Brochure Fare ~~\$6,229~~ pp
 Your rate \$5,979 pp



CAT. C, Violin & Cello Deck
French Balcony, 170 sq. ft.

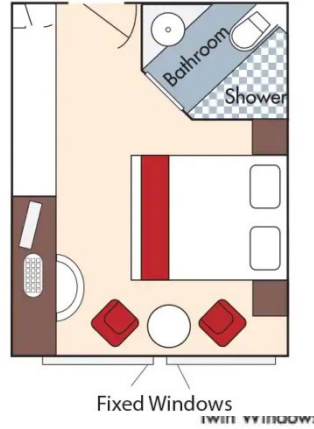
Brochure Fare ~~\$5,629~~ pp
 Your rate \$5,379 pp





CAT. D, Piano Deck
Fixed Windows, 170 sq. ft.

Brochure Fare \$4,529 pp
Your rate \$4,279 pp

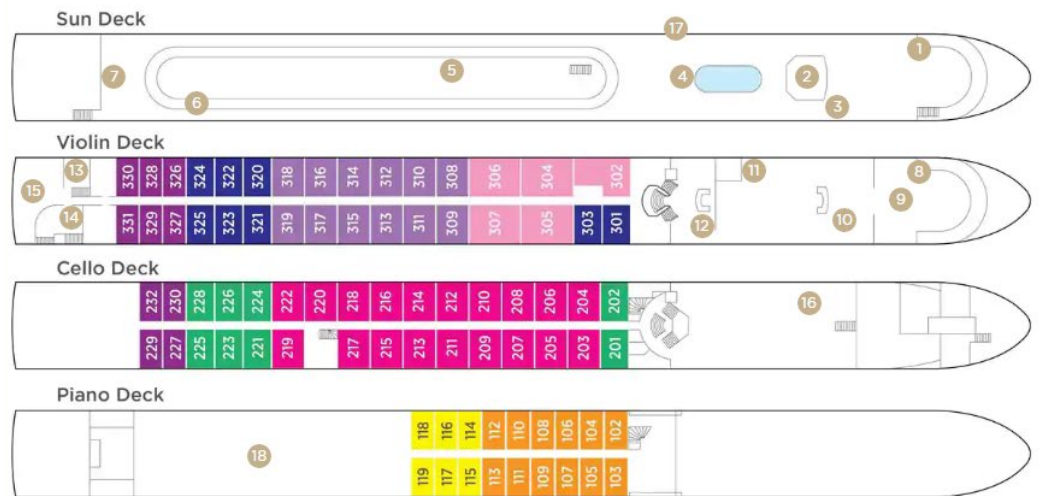


CAT. E, Piano Deck
Fixed Windows, 170 sq. ft.

Brochure Fare \$4,230 pp
Your rate \$3,980 pp

AmaBella DECK PLAN

1	Lower Sun Deck
2	Navigation Bridge
3	Bicycles
4	Heated Pool
5	Sun Deck
6	Walking Track
7	Putting Green
8	Bow Seating Area
9	Observation Lounge
10	Main Lounge & Bar
11	Gift Shop
12	Reception
13	Massage & Hair Salon
14	Fitness Room
15	The Chef's Table Restaurant
16	Main Restaurant
17	Elevator
18	Crew Cabins



Stateroom Categories



Fares listed are cruise-only, per person based on double occupancy inclusive of port charges of \$231 per person.