



**Special Rates when you book
by March 31, 2024!**

RIVER CRUISE FOR WINE LOVERS

Montemar Winery • June 20 – 27, 2024

Bordeaux • Libourne • Saint-Émilion • Blaye • Bourg • Pauillac • Cadillac

AmaDolce



Suite, Violin Deck
French Balcony, 255 sq. ft.

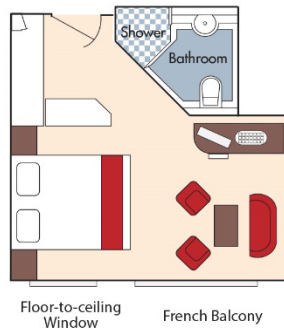
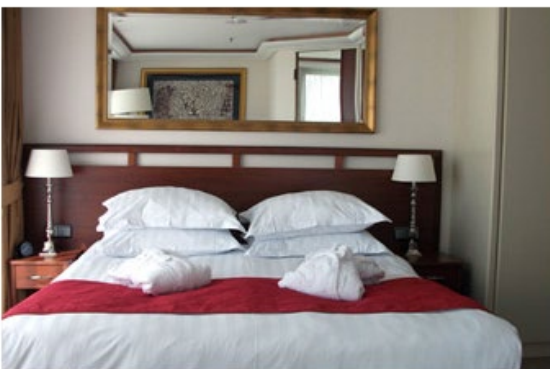
Note: Stateroom layouts shown below are not to scale.



Brochure Fare: ~~\$7,498 pp~~
YOUR RATE: \$7,248 pp



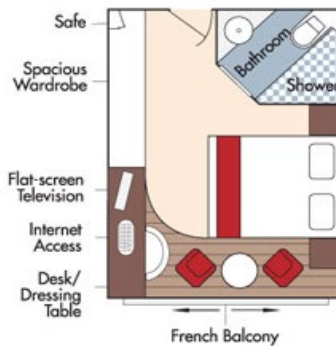
CAT. A+, Violin Deck
French Balcony, 225 sq. ft.



Brochure Fare: ~~\$7,198 pp~~
YOUR RATE: \$6,948 pp

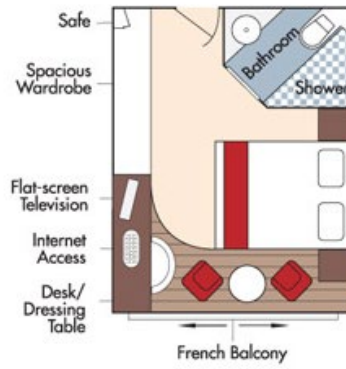


CAT. A, Violin Deck
French Balcony, 170 sq. ft.



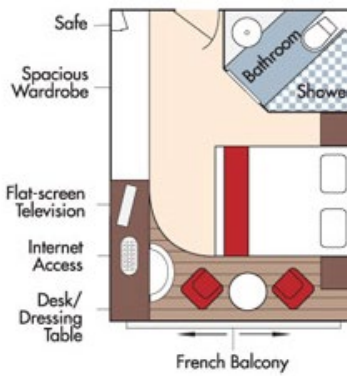
Brochure Fare: ~~\$6,198 pp~~
YOUR RATE: \$5,948 pp

CAT. B, Violin & Cello Deck
French Balcony, 170 sq. ft.



Brochure Fare: ~~\$6,098 pp~~
YOUR RATE: \$5,848 pp

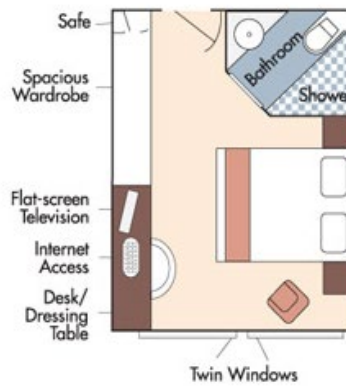
CAT. C, Violin & Cello Deck
French Balcony, 170 sq. ft.



Brochure Fare: ~~\$5,798 pp~~
YOUR RATE: \$5,548 pp

CAT. E, Piano Deck
Fixed Windows, 170 sq. ft.

CAT. D, Piano Deck
Fixed Windows, 170 sq. ft.



Category D
Brochure Fare: ~~\$4,798 pp~~
YOUR RATE: \$4,548 pp

Category E
Brochure Fare: ~~\$4,499 pp~~
YOUR RATE: \$4,249 pp

AmaDolce Deck Plan



Fares listed are cruise-only, per person based on double occupancy and do not include port charges of \$224 per person.