

GRAND EUROPE WINE CRUISE

WITH PAUL WAGNER AND TIM GAISER

Aboard AmaMora • 14 Nights • May 17 – 31, 2025

Amsterdam to Budapest

**SAVE 10% OFF BALCONY
STATEROOMS WHEN BOOKED
BY DECEMBER 31, 2023!**

*Note: Stateroom layouts shown below
are not to scale.*

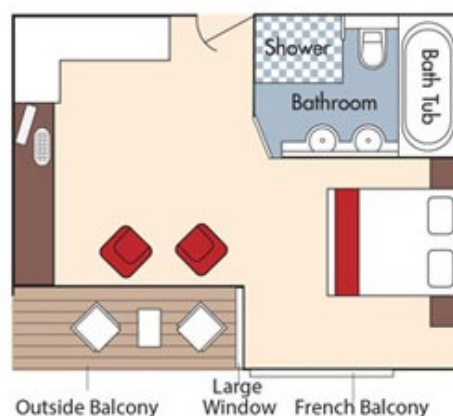
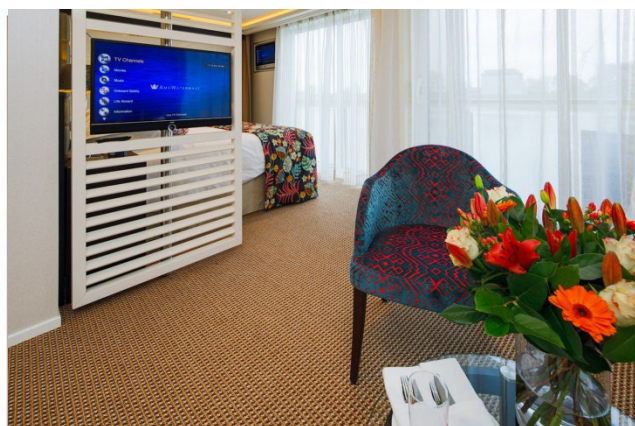


Suite *Violin Deck*

French Balcony & Outside Balcony, 350 sq. ft.

Brochure Rate: ~~\$15,887 pp~~

Wine Cruise Rate: **\$14,298 pp**

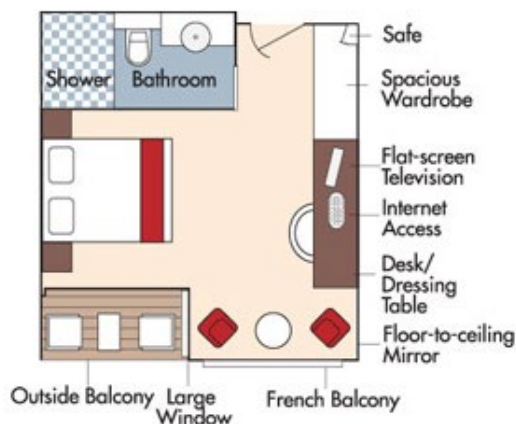


Category AA *Violin Deck*

French Balcony & Outside Balcony, 235 sq. ft.

Brochure Rate: ~~\$13,220 pp~~

Wine Cruise Rate: **\$11,898 pp**



Fares listed are cruise-only, per person based on double occupancy and include the exclusive wine package. Port charges of \$462 per person are additional.

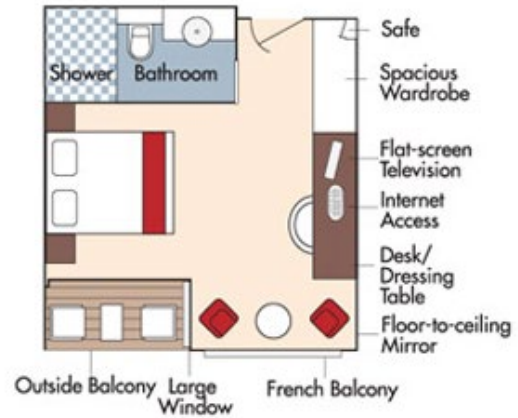


Category AB *Cello Deck*

French Balcony & Outside Balcony, 235 sq. ft.

Brochure Rate: ~~\$12,887 pp~~

Wine Cruise Rate: \$11,598 pp

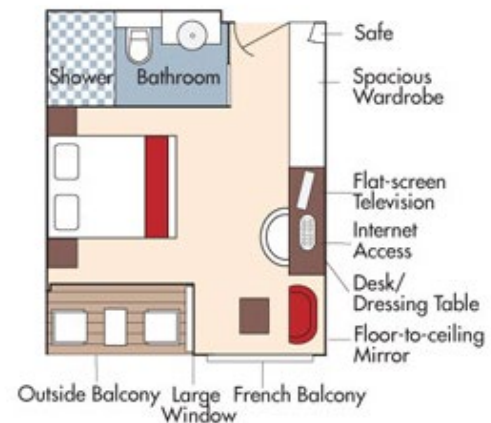


Category BA *Violin Deck*

French Balcony & Outside Balcony, 210 sq. ft.

Brochure Rate: ~~\$12,553 pp~~

Wine Cruise Rate: \$11,298 pp



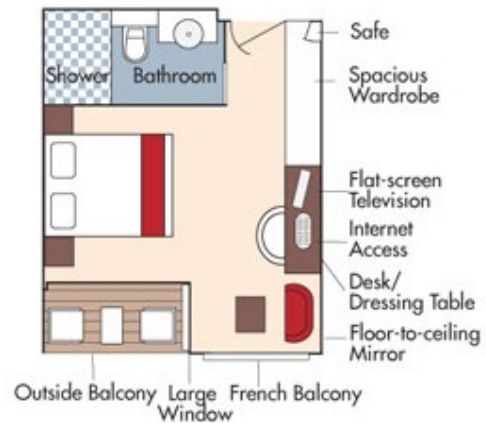


Category BB *Cello Deck*

French Balcony & Outside Balcony, 210 sq. ft.

Brochure Rate: ~~\$12,109 pp~~

Wine Cruise Rate: \$10,898 pp



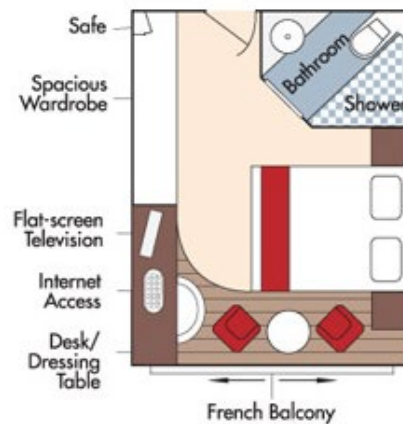
Category CA *Violin & Cello Deck*

French Balcony, 170 sq. ft.

Category CA

Brochure Rate: ~~\$10,887 pp~~

Wine Cruise Rate: \$9,798 pp



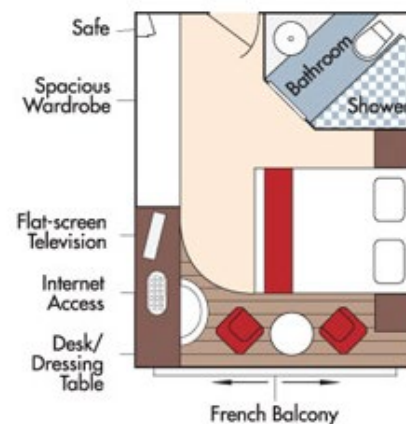
Category CB *Violin Deck*

French Balcony, 155 sq. ft.

Category CB

Brochure Rate: ~~\$10,109 pp~~

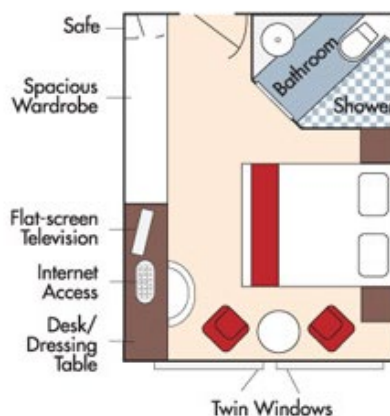
Wine Cruise Rate: \$9,098 pp



Fares listed are cruise-only, per person based on double occupancy and include the exclusive wine package. Port charges of \$462 per person are additional.

Category D *Piano Deck*
Fixed Windows, 160 sq. ft.

Wine Cruise Rate: \$7,798 pp

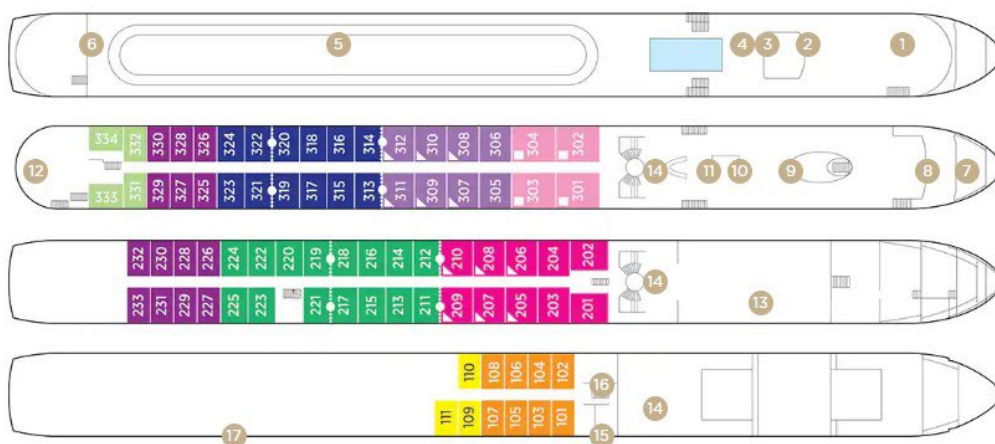


Category E *Piano Deck*
Fixed Windows, 160 sq. ft.

Wine Cruise Rate: \$7,299 pp

AmaMora
DECK PLAN

1	Lower Sun Deck
2	Navigation Bridge
3	Bicycles
4	Heated Pool
5	Sun Deck
6	Walking Track
7	Al Fresco Terrace
8	Observation Lounge
9	Main Lounge & Bar
10	Gift Shop
11	Reception
12	The Chef's Table Restaurant
13	Main Restaurant
14	Elevator
15	Massage & Hair Salon
16	Fitness Room
17	Crew Cabins



Note: Elevator reaches the Violin, Cello and Piano Deck (does not reach the Sun Deck).

Staterooms can become adjoining by request.

Up to triple occupancy

Stateroom Categories

SUITE	AA	AB	BA	BB	CA	CB	D	E
-------	----	----	----	----	----	----	---	---

Fares listed are cruise-only, per person based on double occupancy and include the exclusive wine package. Port charges of \$462 per person are additional.